

TRENCH

OBO Bettermann Group

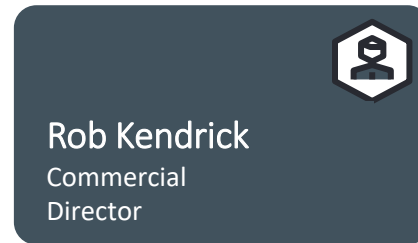
Welcome

EDA ELECTRICAL
DISTRIBUTORS'
ASSOCIATION





OBO Bettermann Group



OBO Bettermann Group company Trench Ltd are a UK based steel cable containment manufacturer, supplying a vast array of products to the construction & renewable industries.

In 2015 world leading manufacturer OBO Bettermann acquired Trench Ltd providing the perfect scenario to expand upon their excellent global reputation for quality & service in the construction & renewable industries.

To compliment Trench Ltd's 20+ years of manufacturing steel cable containment, OBO Bettermann carry an extensive product portfolio of some 33'000 lines, with many of them leaning towards the construction & renewable industries including, Cable Management, Fire Protection, Lightning Protection Systems & Surge Protection Devices.

In provision of our vast product offering, we offer a huge array of support including, Project planning at every phase, (AutoCAD, REVIT, STEP), Product BIM Modelling and typicals.



Trench Ltd (UK)
10,000 m²



**OBO Bettermann
(Germany HQ)**
160,000 m²



OBO Bettermann Hungary
105,000 m²

TRENCH

OBO Bettermann Group

- ❑ Trench Ltd 2001 Incorporated
- ❑ Steel containment manufacturer
- ❑ 2015 Acquired by OBO Bettermann
- ❑ Global operation
- ❑ Additional 33'000 products
- ❑ International Technical support
- ❑ Project and planning support
- ❑ Distribution network support

- ❑ OBO Bettermann Grp Turnover €950m+

Company History

1911



Founding of sheet metal factory for fastening technology and external lightning protection

1952



“Ohne Bohren” (no drilling) – innovative metal anchors come onto the market. The OBO brand name is born.

1959



The OBO man goes global as a popular figure and a synonym for installation technology.

1986



Internationalisation: OBO grows, from Philadelphia to Beijing, from Helsinki to Johannesburg.

1992



Foundation of OBO Bettermann Hungary Kft. near Budapest. Today it is the largest production and logistics side of the whole OBO Group.

2006



OBO continues the portfolio of the Ackermann company, founded in 1919, and becomes the market leader for underfloor systems and a leading system provider in cable management.

2011



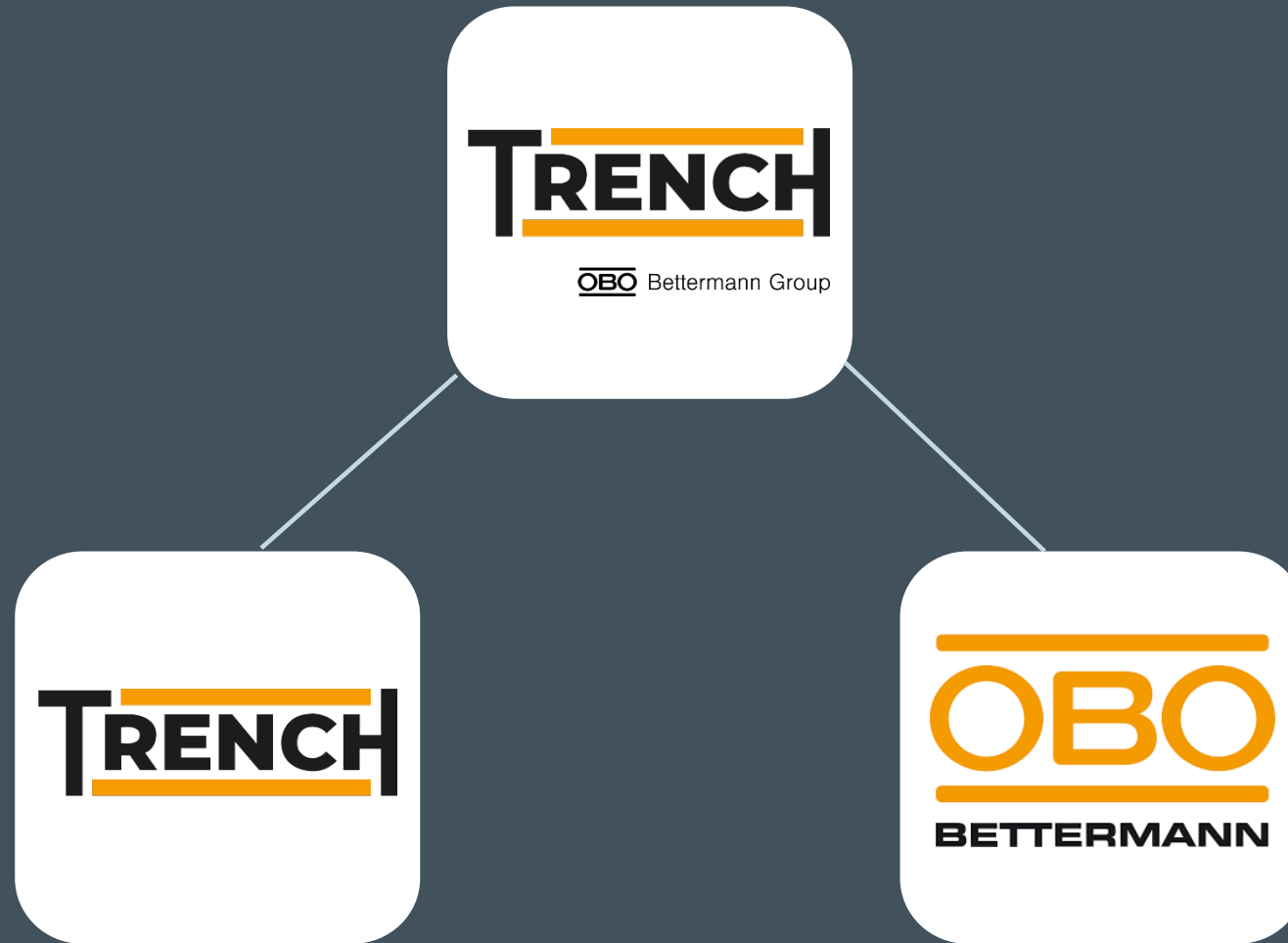
OBO celebrates its 100th anniversary! And just in time for the anniversary, the metal competence centre is completed and operations start.

2015



OBO Bettermann acquires Trench Ltd as a market leader in the field of “British Standard Trunking” and therefore a valuable addition for OBO.

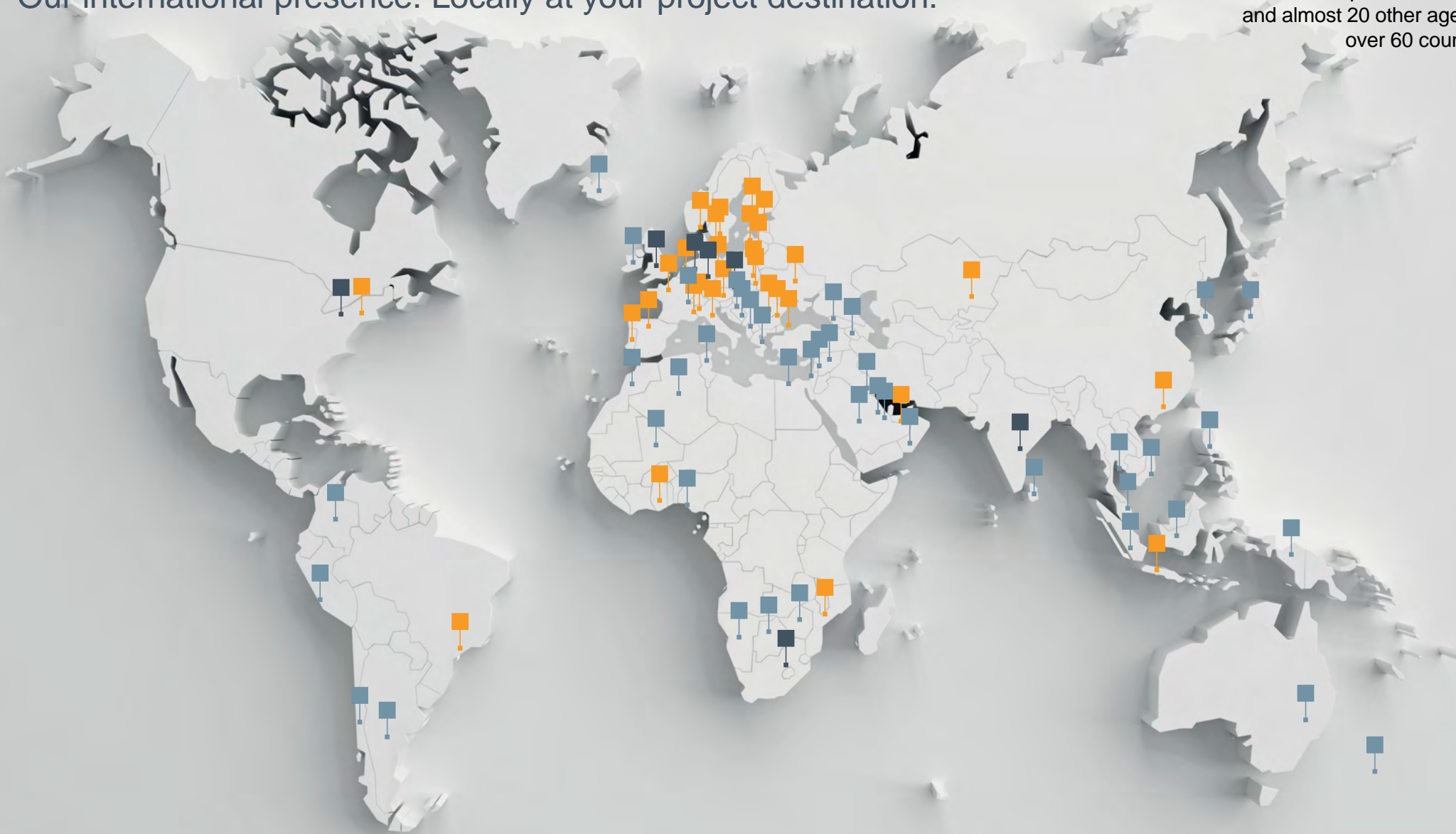
Trench Ltd – Company Brands



Over 100 years of experience.

Our international presence. Locally at your project destination.


At OBO, regional connections meet a global presence.
We now generate more than half of our total sales
abroad. With 7 production companies, 40 subsidiaries
and almost 20 other agents, we are represented in
over 60 countries across all continents.



Key Facts:

30,000 

products are produced by OBO for electrotechnical infrastructures.

35% 

of all OBO products are less than five years old.

3 

OBO installation areas: Industrial, Building, and Safety and protection.

60 

countries around the world in which OBO is represented.

4,200 

employees around the world.

5,900,000,000



OBO anchors® have been produced since 1952.

9,800 

tonnes reduction in CO2 emissions per year at our location in Menden.

832 

patents are owned by OBO for its products.

2,000 

kilometres of cable ladders are produced every year at the Menden site.

45% 

less paper use in the last ten years!

15 

years – that is the average length of employment at OBO.

111 

years of enthusiasm! OBO has a long history of success.



Underfloor Systems

The brand that carries power

TRENCH
OBO Bettermann Group

Examples of Underfloor System Applications



Office



Residential



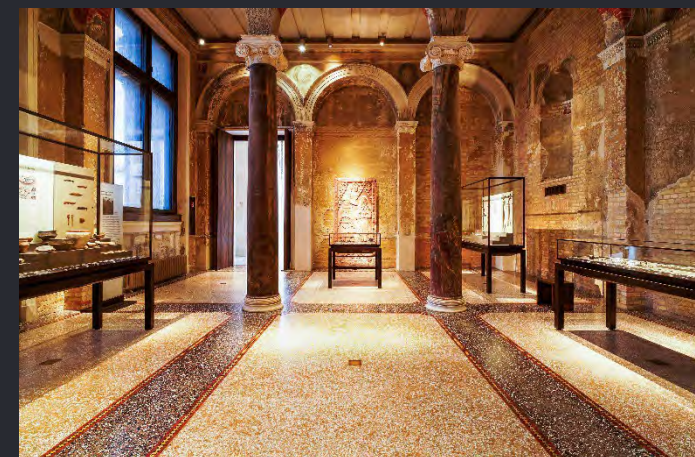
Hotels



Car Showrooms



Airports



Museums

The brand that carries power

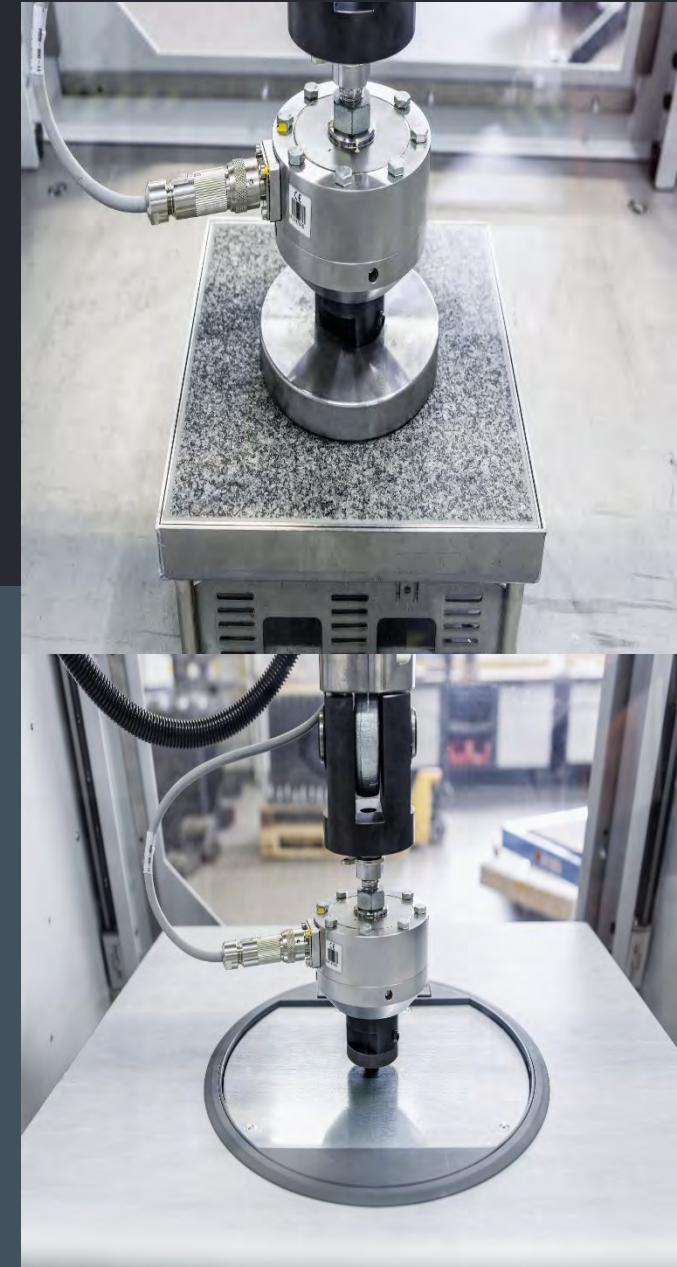
TRENCH

OBO Bettermann Group

Classification according to EN 50085-2-2 & IEC 61084

Underfloor cable management systems must be classified according to:

- Resistance to vertical load applied through small surface area
- Resistance to vertical load applied through large surface area
- Temperatures for storage (min) and application (min and max)
- Resistance to flame propagation
- Electrical continuity characteristics
- Electrical insulation characteristic
- Degrees of IP protection
- Floor treatment



The brand that carries power

TRENCH

OBO Bettermann Group

Floor Cleaning

Dry care

No liquids are used for the cleaning of floor coverings, i.e. vacuum.

Damp care

The use of damp cloths or wipes to clean the floor surface.

Wet care

When cleaning floors using liquids and applicators such as mops or commercial cleaning machines.



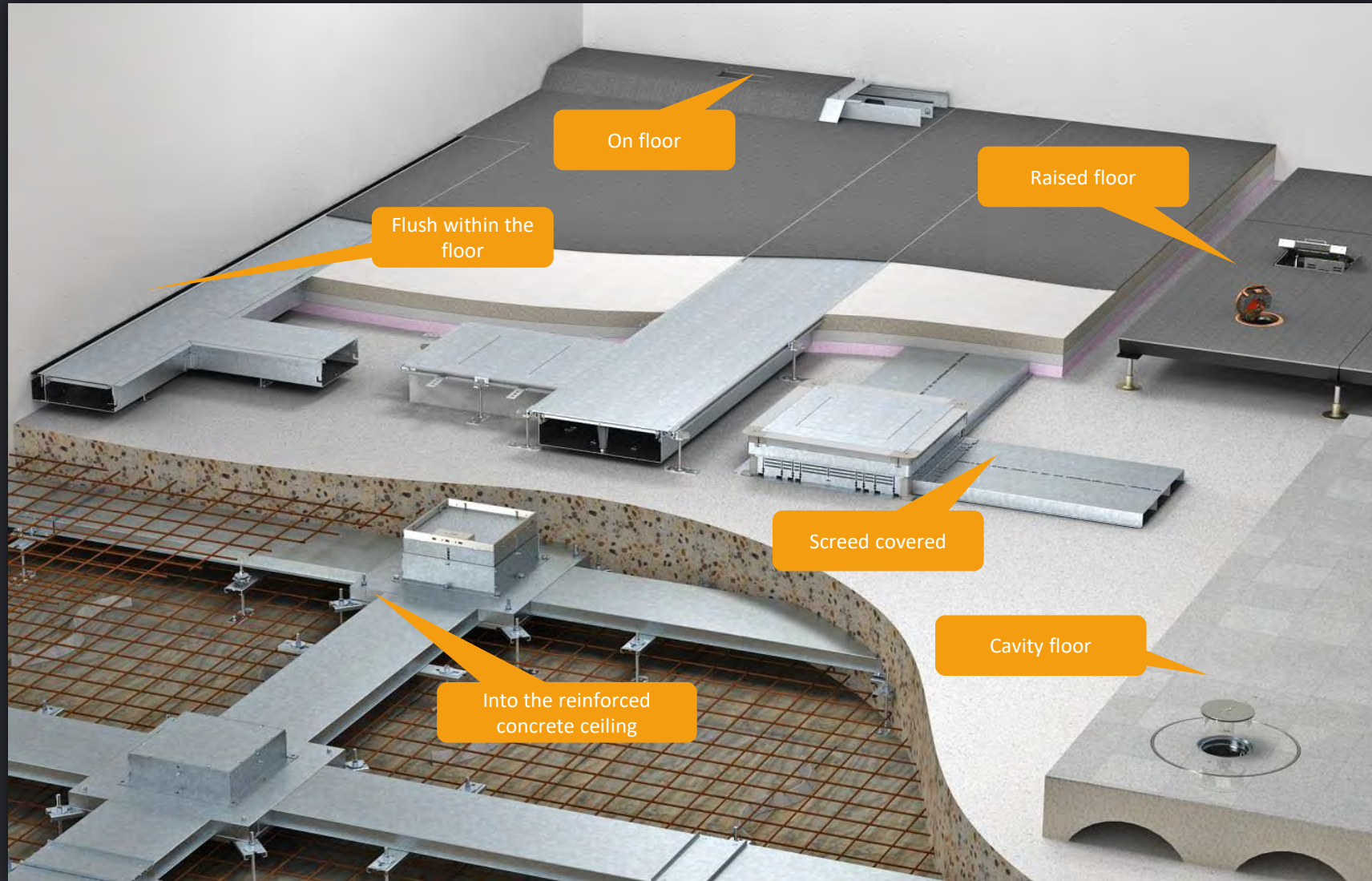
Protection ratings to IP and IK

Ingress & Impact

Product	IP when used	IP when unused	IK
Plastic GES	20	40	8
Stainless steel GESM	20	40	10
Metal GRAF9	20	65	10
Cassette, cord outlet RKS	20	40	10
Cassette, tube body RKF	20	65	10
Cassette, blank	20	65	10
UDHOME	20	40	10
UDHOME tube body	20	65	10
GES R2	20	66	10



Underfloor Systems



The brand that carries power

TRENCH

OBO Bettermann Group

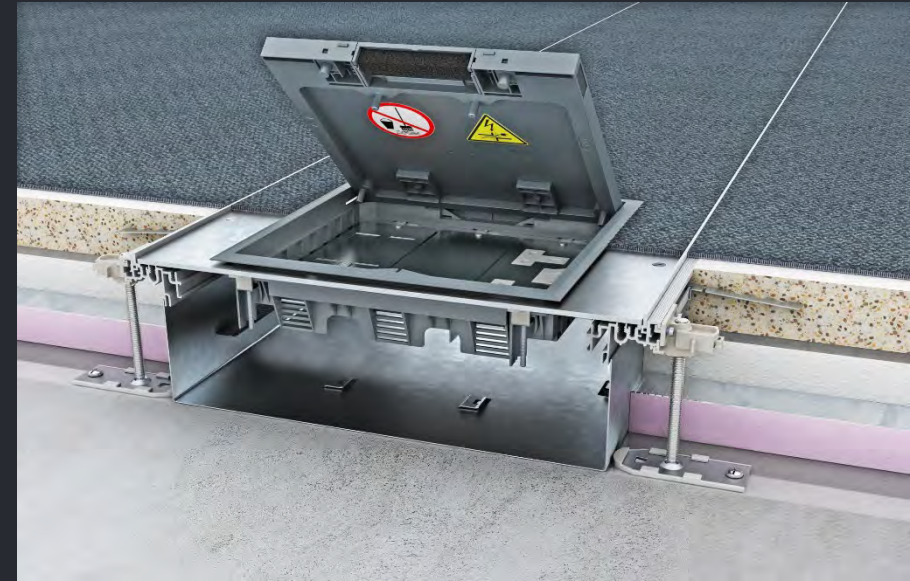
Choosing the Correct System

Considerations to be made when selecting your underfloor system.



Underscreed System

- Customer requirement/flexibility
- Floor construction type
- Floor heights
- Sound transmission
- Load-bearing factors
- Cable capacity
- Wet or dry cleaned floor – use of cleaning machines
- Fire protection requirements



Flush Floor System



Underscreed Trunking System

The brand that carries power

TRENCH

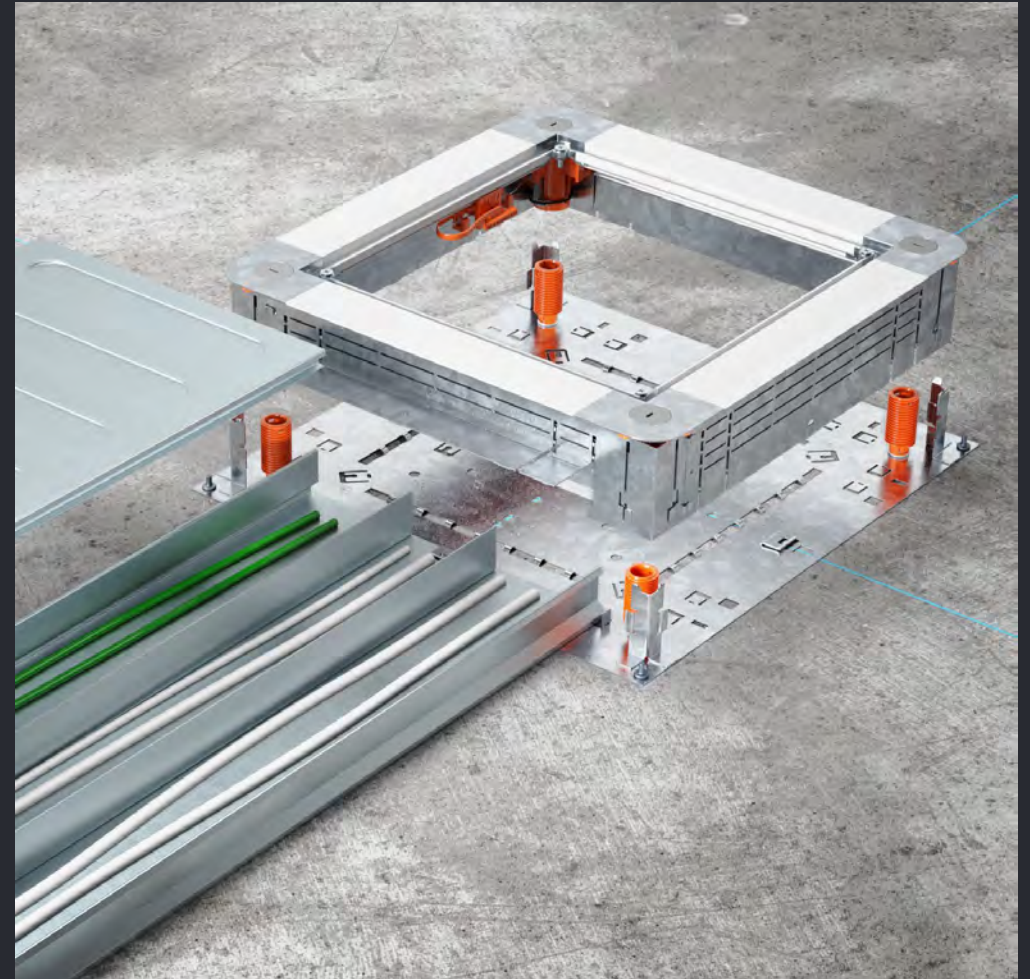
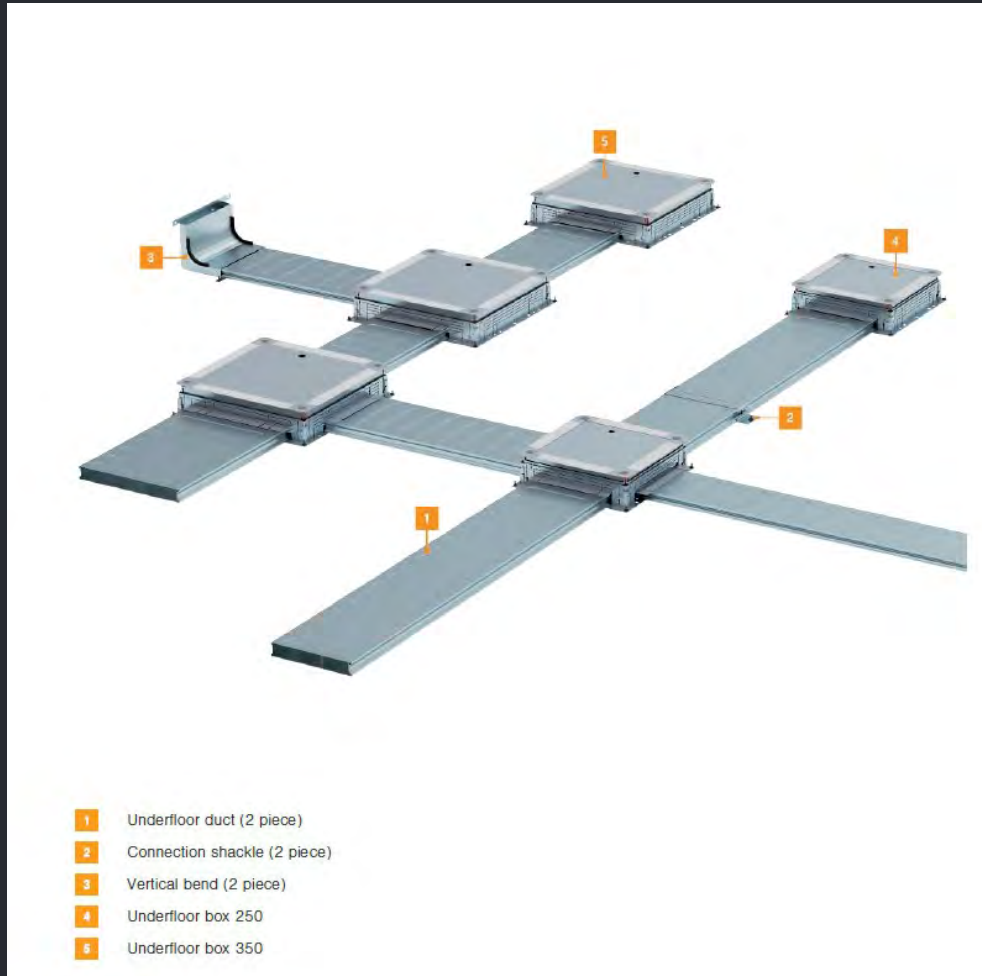
OBO Bettermann Group

EÜK – Underscreed Trunking System

- For use with many types of screed.
- Various size options, with two or three compartments for the separation of power and data cables
- Can be used in conjunction with underfloor heating
- 2-part channel system with removable top cover, for ease of installation
- Heavy-duty options available
- A wide range of floor height flexibility
- Soundproof – decoupled system to reduce the transmission of sound



Service Outlets & Junction Boxes



Underfloor solution for high-quality Terrazzo floorings

Floor box installed with a decoupled trimless cassette outlet.

- 100 % acoustic decoupling
- No expansion joint
- Solution for heated floors
- Heavy duty load bearing
- For wet & dry floor cleaning
- Height adjustable system



The brand that carries power

TRENCH

OBO Bettermann Group

Flushfloor Trunking System



The brand that carries power

TRENCH

OBO Bettermann Group

OKA-T - Flushfloor Trunking System

System Features

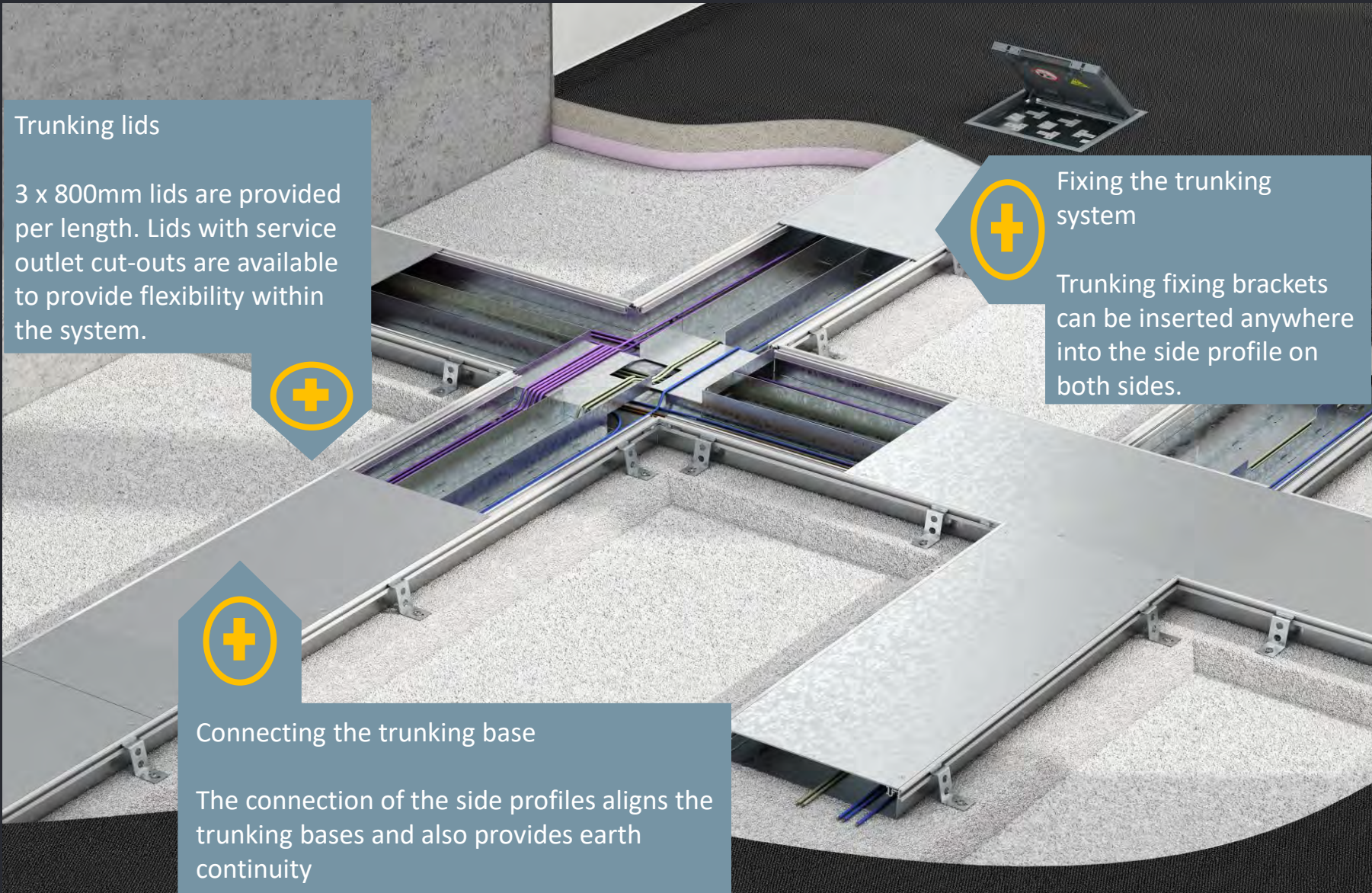
- Can be opened and accessed once installed
- Service outlets can be added or repositioned at any time

System Sizes

- The system height of the OKA-T trunking system is fixed at 65mm
- 300mm & 400mm widths are available



Flush Floor Trunking System – Typical Installation



Trunking lids

3 x 800mm lids are provided per length. Lids with service outlet cut-outs are available to provide flexibility within the system.



Fixing the trunking system



Trunking fixing brackets can be inserted anywhere into the side profile on both sides.



Connecting the trunking base

The connection of the side profiles aligns the trunking bases and also provides earth continuity



Cassettes & Service Outlets

The brand that carries power

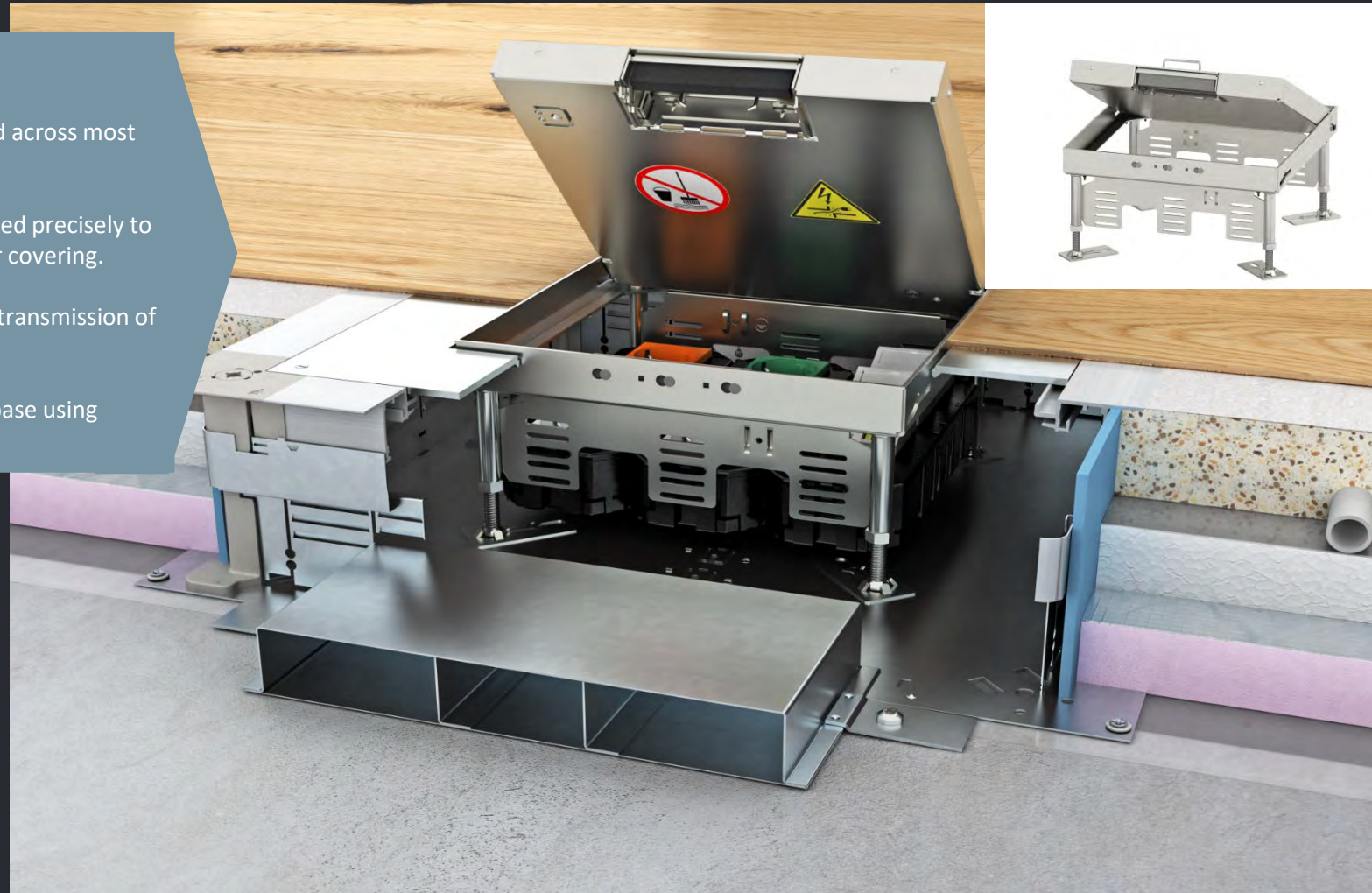
TRENCH

OBO Bettermann Group

Cassette Solutions

Height-Adjustable Cassettes

- Universal application can be used across most underfloor trunking systems.
- Height-adjustable - can be adjusted precisely to the top edge of the finished floor covering.
- Can be decoupled to reduce the transmission of sound.
- Can be fastened to a raw concrete base using height adjustment feet.



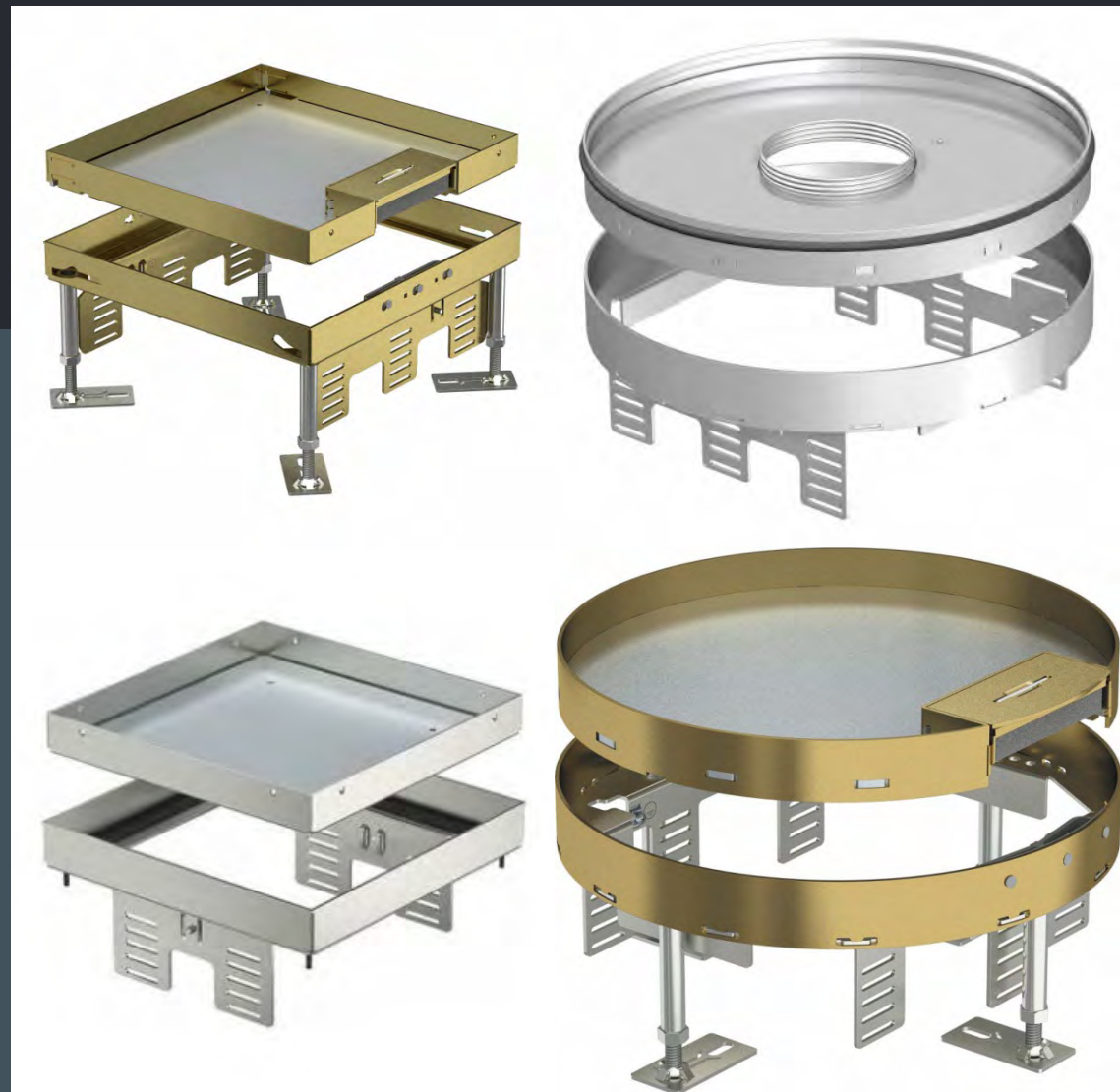
The brand that carries power

TRENCH

OBO Bettermann Group

Trimless Cassette Solutions

- Easy access
- For high loads
- High quality materials – Stainless Steel & Brass
- Variety of floor inlays
- Rectangular and round versions
- For dry and wet cleaned floors
- Decouplable to reduce the transmission of sound
- Compatibility with any underfloor systems i.e. underscreed and flushfloor



The brand that carries power

TRENCH

OBO Bettermann Group

GES Service Outlets

- Easy access
- Can be used in cavity floors
- 4 sizes of rectangular version
- 3 sizes of round version
- Made of polyamide and stainless steel
- Compatibility with most underfloor systems i.e. underscreed and flushfloor
- Solutions for wet and dry cleaned floors
- Variety of floor inlay



The brand that carries power

TRENCH

OBO Bettermann Group

Cassette Accessories



Socket Outlets



Data Plates



Blank Plates

*Data and multimedia modules are available



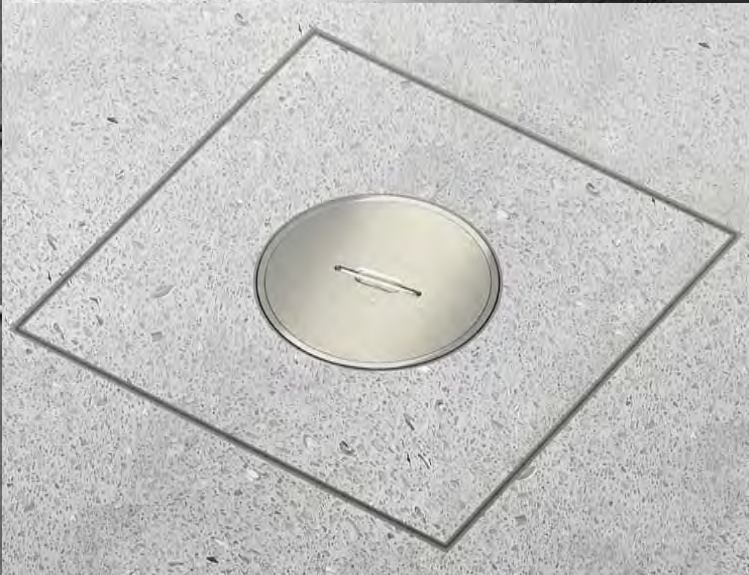
The brand that carries power



TRENCH

OBO Bettermann Group

Cassette Examples



The brand that carries power



TRENCH

OBO Bettermann Group

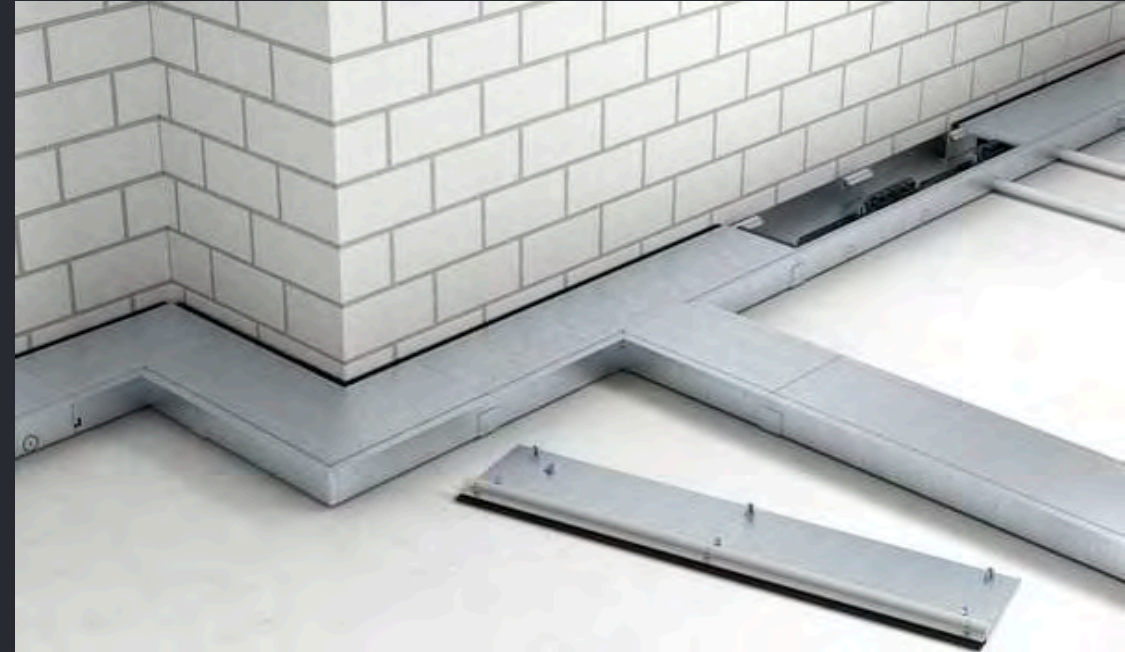
A wide-angle photograph of a modern gym interior. The floor is made of light-colored wood. Rows of black treadmills with yellow accents are arranged in a long aisle. In the background, other gym equipment like weight machines and benches are visible under bright overhead lighting.

Brush Bar Trunking System

The brand that carries power

Discreet Brush Bar Trunking System

- Aesthetic in appearance
- Continuous with many finished floor coverings
- Flexible, discreet perimeter brush bar cable outlet
- Accessible system post-installation
- 2-compartments
- Height adjustable



The brand that carries power



TRENCH

OBO Bettermann Group

Ideal for panoramic glass windows or office partitioning



The brand that carries power



TRENCH

OBO Bettermann Group

UDHome & Grommets



The brand that carries power

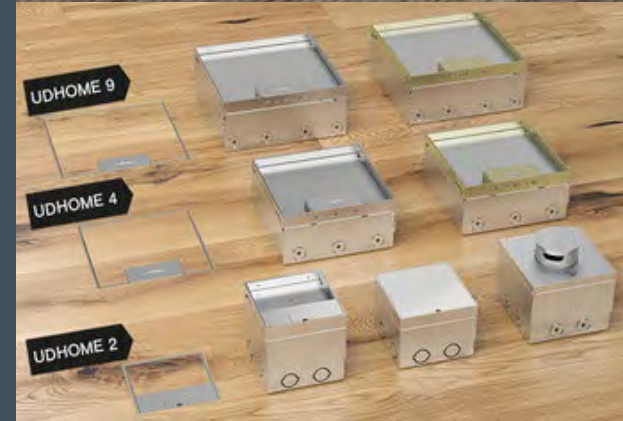
UDHome: Standalone Solutions



UDHOME floor boxes

Elegant, Discreet & Robust


- Standalone unit
- High-quality materials and machining
- Stainless Steel, Brass, Aluminium
- 3 sizes available
- Multiple options for power, data and multimedia outlets
- Adjustable height with optional height compensation set
- 20mm and 25mm conduit entries
- Available empty or pre-equipped as well



The brand that carries power

TRENCH

OEO Bettermann Group



The UDHOME9 is available in stainless steel and brass versions.

Dimensions
Body: 243 mm x 243 mm
Screed height: 95–110 mm
Floor height: 95–125 mm
Optional height extension



The UDHOME9 is the largest floor box of the UDHOME family. It combines restrained design with a wide range of use options.

GES R2 Floor Grommets

Elegant, Discreet & Robust

- Heavy duty die cast zinc outlet
- 5 outlet cover designs
- 7 colours available
- Power, data & multimedia accessories available
- Small and compact
- Suitable for dry or wet-cleaned areas
- Available in plastic
- Anti-tamper version available
- Suitable for in-screed and cavity floors



The brand that carries power

TRENCH

OBO Bettermann Group

GESR2: Modular Series

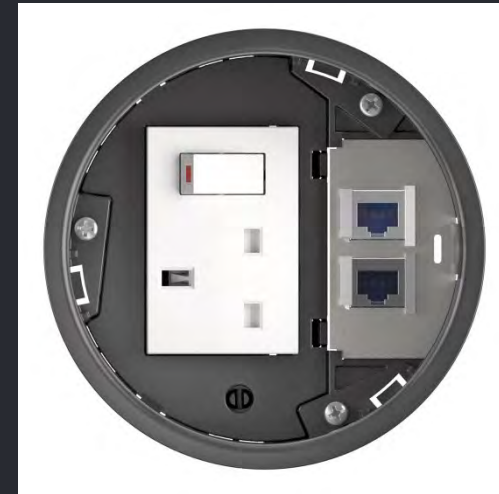
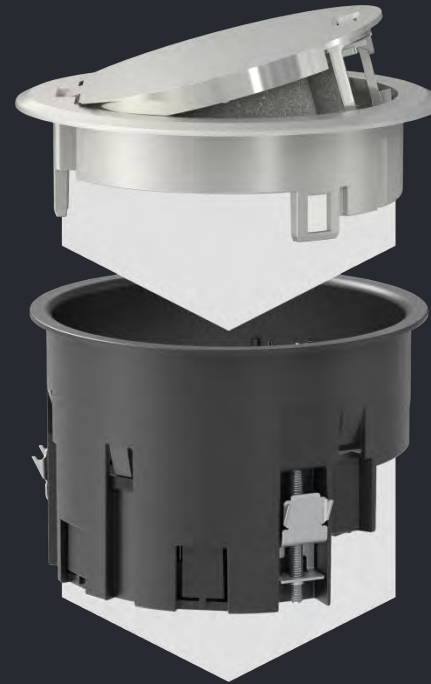
Choose cover

The classic service outlet for the GES R2 floor socket is available in various designs and colours.

Mounting Socket

The installation mounting socket is provided in an empty state, enabling for various socket and multimedia options to be installed.

The mounting socket can be used for screed or cavity floors.

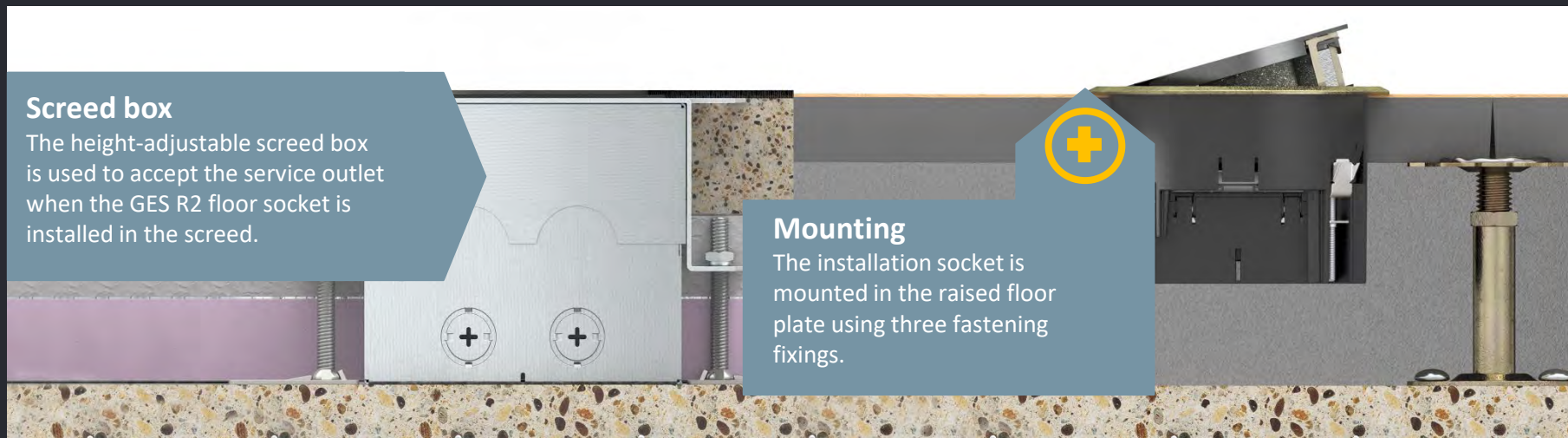


Screed box

The height-adjustable screed box is used to accept the service outlet when the GES R2 floor socket is installed in the screed.

Mounting

The installation socket is mounted in the raised floor plate using three fastening fixings.



GESR2: Tubular & Anti-Tamper



GESR2: Hinged Lid



The brand that carries power

Selection Guides Available

Selection Guide for Underscreed Trunking and Service Outlet Boxes size 250-3

www.trenchlid.com | sales@trenchlid.com | 0121 544 7011

Glue 250 mm width, 28 mm height

Duct, 3-compartment	83 25028-2	7420275
Connection shackle	VL 256-2	7420952
Vertical bend, 90°	KV3 25028-2	7420545

Duct 250 mm width, 30 mm height

Duct, 3-compartment	83 25030-2	7420278
Connection shackle	VL 256-2	7420952
Vertical bend, 90°	KV3 25030-2	7420552

UZD 250-4 underscrew box

Version	Type	Item no.
80-160	UZD 250-4	7410033

Blanking lid

Item no.	DUG 250-3 6	7400463
----------	-------------	---------

Service outlet

Item no.	OS90 U 7513	7400308
Customer stock	OS90 U 9013	7400310
Point loading with small surface of Ø 13mm		20V
Point loading with big surface of Ø 13mm		30V

Blanking lid

Item no.	DUG 250-3 9	7400467
----------	-------------	---------

Service outlet and inspection lid

Item no.	OS90-3B U 7011	7400311
Customer stock	OS90-3B U 9011	7400313
Item no.	ZES9-2-0107 7011	7400317
Item no.	ZES9-2-0107 9011	7400318
Point loading with small surface of Ø 13mm		20V
Point loading with big surface of Ø 13mm		30V

Height adjustable cassette

Item no.	RS302 9 V250	7400319
Item no.	RS302 UZD20 9 V250	7400320
Leveling profile	NW 250-2 GK	7410540
Point loading with small surface of Ø 13mm		20V
Point loading with small surface of Ø 13mm		30V

Cassette for tube body

Item no.	RS302 9 V250	7400319
Item no.	RS302 UZD20 9 V250	7400320
Leveling profile	NW 250-2 GK	7410540
Point loading with small surface of Ø 13mm		20V
Point loading with small surface of Ø 13mm		30V

Variable floor covering levels to the service point

Rectangular: 3 or 15 mm

Standard steel cassette with 90 mm floor covering levels

Height adjustment range: 105-150 mm (rectangular)

Standard steel cassette with 20 mm floor covering levels

Height adjustment range: 105-150 mm (rectangular)

Please note the tube body necessary

IP 20 when in use

IP 44 when not in use

Building Connections



OBO Bettermann Group

Device installation and accessories

www.trenchlid.com | sales@trenchlid.com | 0121 544 7011

Device installation, nominal size 6

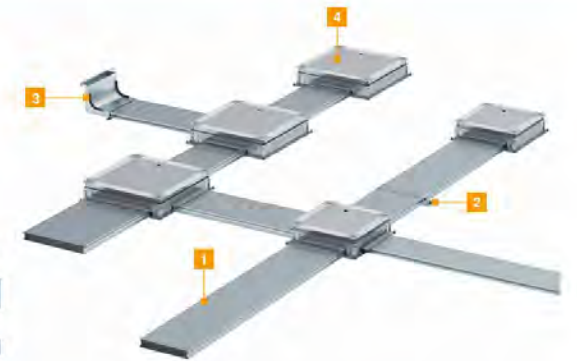
	Mounting plate	Cover plate	Cover plate	BS socket with cover plate
Type	MT 6 AP2	AP MT2 0	AP MT2 1	AP MT2 BS 2550
Version	for 3 cover plates AP MT2	blank	for LJCBC	Switched double socket
Item no.	7407 75 2	7407 81 2	7408 81 6	7407 87 2

Device installation, nominal size 9 and R9

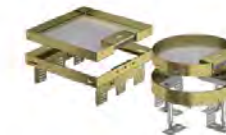
	Mounting plate	BS socket with cover plate	BS socket with cover plate	Blank plate	Data plate
Type	MT R9 AP 5	AP MTS BS 2550	AP MTS BS 2x550	AP MTS 0	AP MTS 1
Version	for 3 cover plates AP MTS	Switched double socket	2 x switched single sockets	blank	for LJCBC
Item no.	7407 75 6	7407 87 0	7407 87 8	7408 82 4	7406 90 0

Accessories

	Tube body for round and square cassettes	Tube body for round and square cassettes with connection cable	Leveling system	Supporting system
Type	TUKZ V	TUKZ GV	SAWR	UZD CG2 250250
Version	Cover made of V2A	Cover made of V2A	required for UZD	For UZD 3 to be used as a 90°/45°
Item no.	7428 14 1	7428 14 8	6088 70 4	7428 42 8



- 1 Underfloor installation duct
- 2 Connection shackle
- 3 Vertical bend
- 4 Underfloor junction and branch box 250 (UZD)



Cassettes also available in brass. For more information contact your Trench sales team.

Building Connections



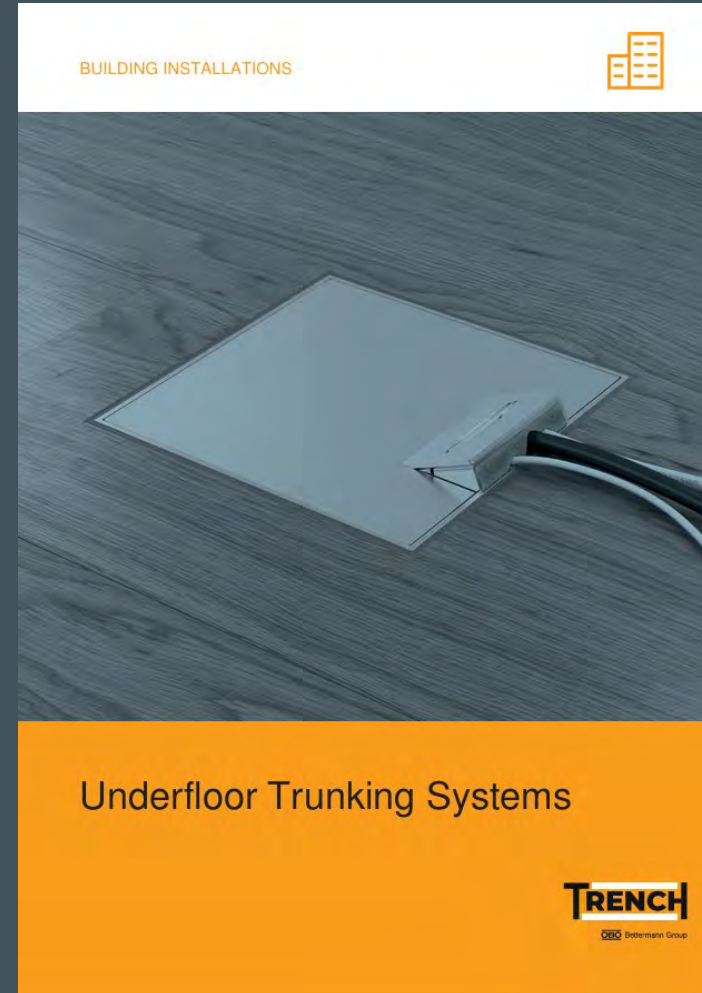
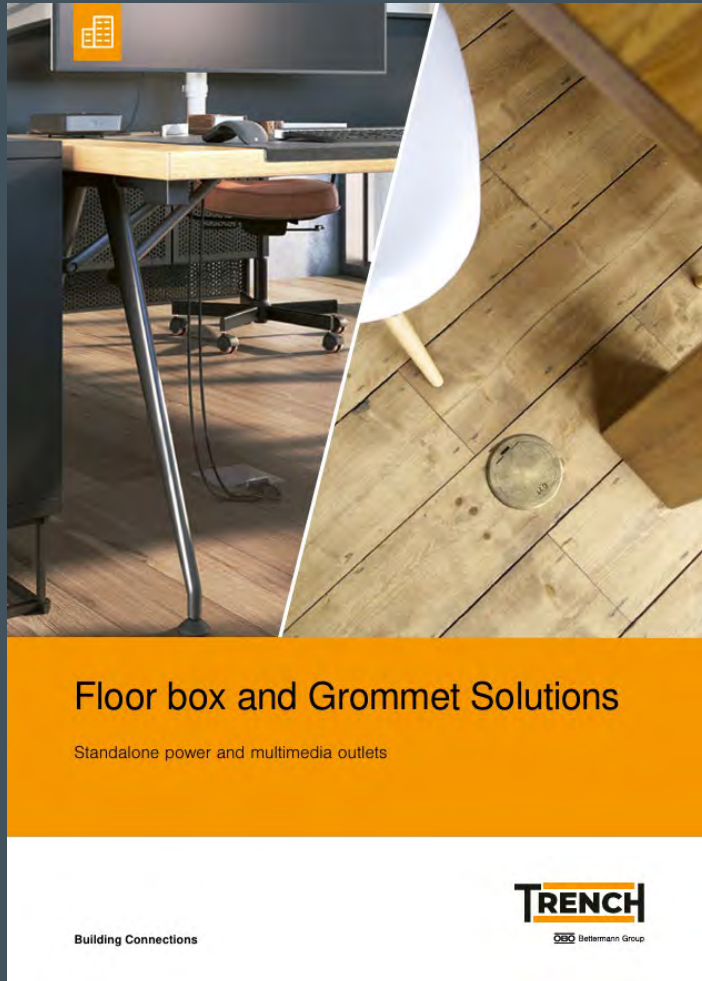
OBO Bettermann Group

The brand that carries power



OBO Bettermann Group

Catalogues



The brand that carries power

Fire Protection Trunking



The brand that carries power

TRENCH

OBO Bettermann Group

PYROLINE® Rapid PLM

The PYROLINE® Rapid PLM harmonises visual and technical fire protection requirements perfectly.

A flexible and discreet fire protection solution – ideal for new buildings and refurbishment projects.

Hospitals, Social Housing, Communal areas.

Uniquely intelligent safety system that's approved to the classification EN13501-2, achieving the fire ratings of EI30/EI60/EI90 and E120.



The brand that carries power

TRENCH

OBO Bettermann Group

Fire protection test and classifications

1. Classification of the fire resistance of the entire installation according to EN 13501-2
 - EI30 ($h_o \leftrightarrow o$), EI60 ($h_o \leftrightarrow o$), EI90 ($h_o \leftrightarrow o$), EI120 ($h_o \leftrightarrow o$)
2. Classification of the fire behaviour according to EN 13501-1
 - A2-s1, d0
3. Fire test on installation ducts according to DIN EN 1366-5



The brand that carries power

TRENCH

OBO Bettermann Group

Comprehensive Catalogue Portfolio

- Closed, sheet steel system
- Internally lined with a fire protection mesh
- Wide portfolio of components and accessories for almost any installation



The brand that carries power

Four Dimensions



40 x 44



40 x 100



80 x 100



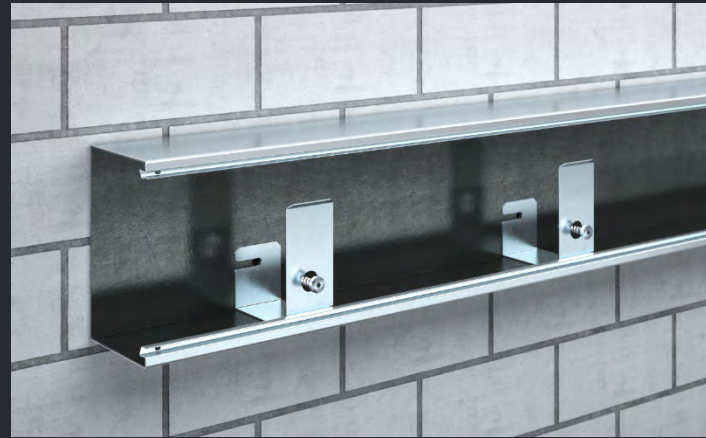
120 x 200

The brand that carries power

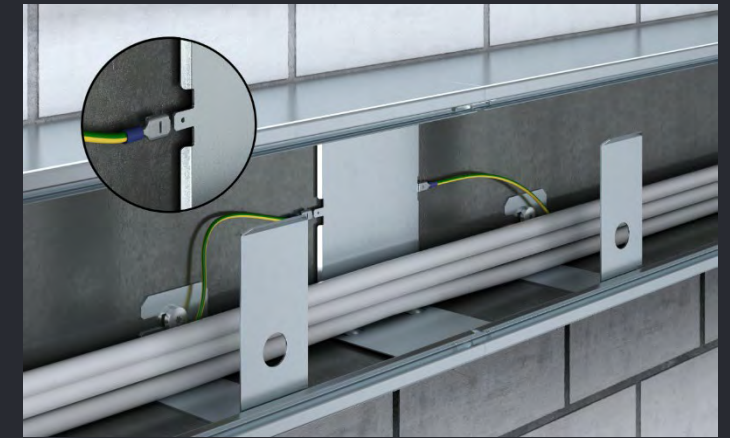
TRENCH

OBO Bettermann Group

Safety that adapts to the architecture



Pressure clip for safe cable routing



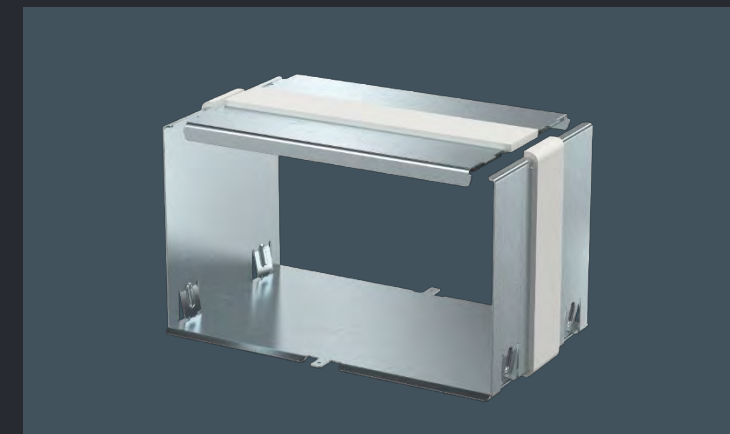
Equipotential bonding possible between segments



Version in powder coating RAL 9010



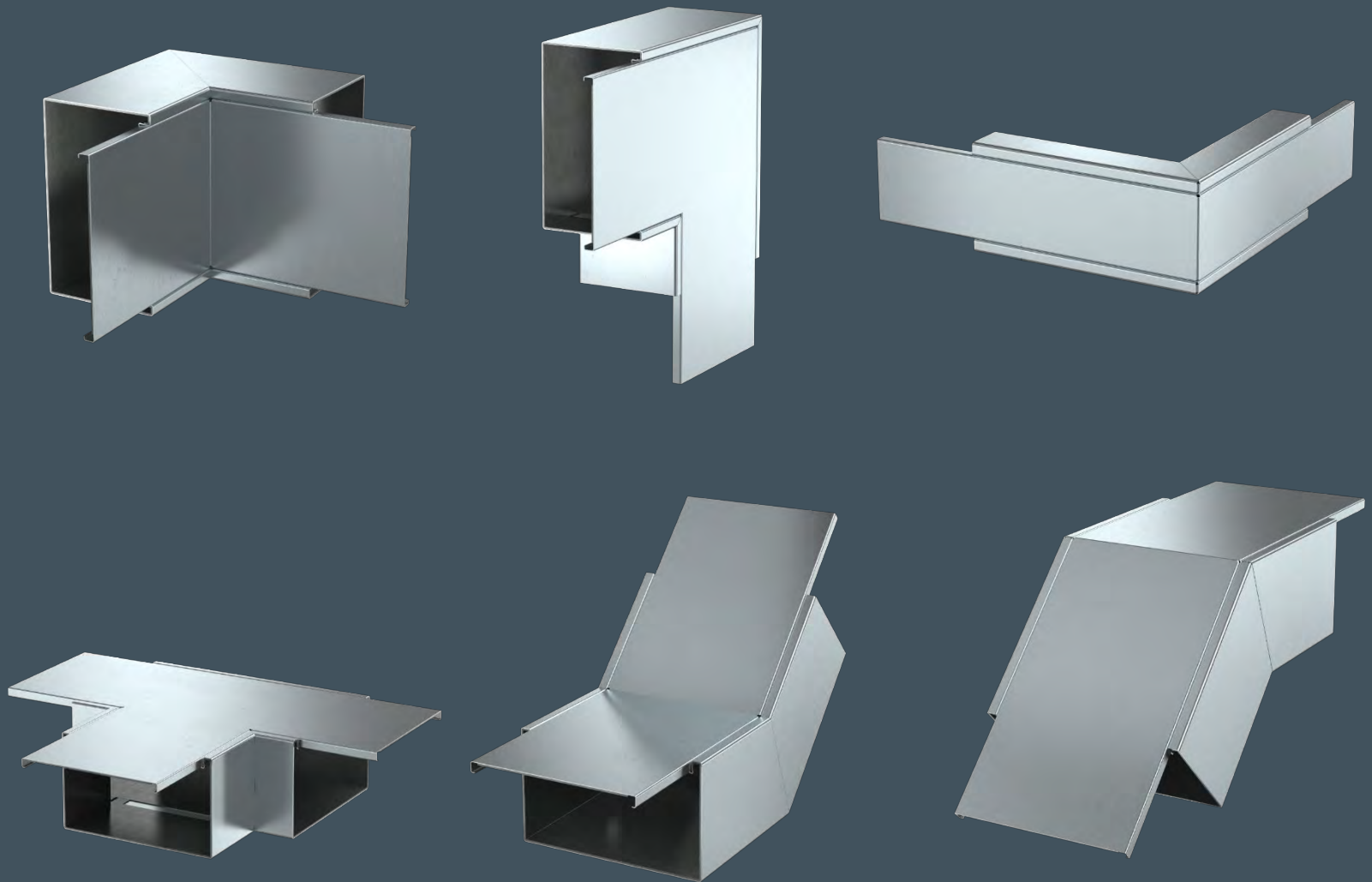
Version in strip-galvanised sheet steel



Sealing through internal connection

Factory-made fittings

Simple changes of direction
for all trunking sizes

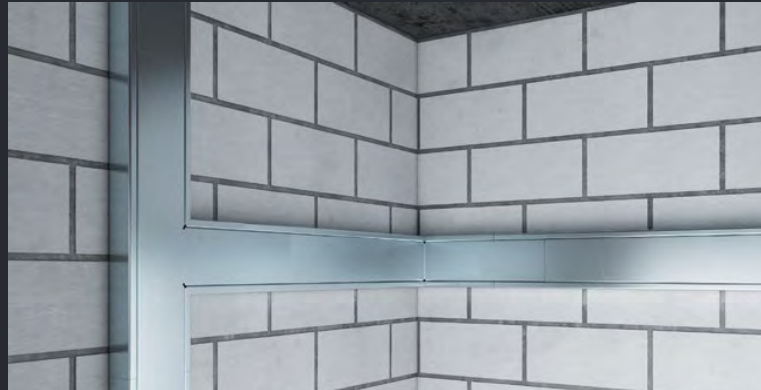


The brand that carries power

TRENCH

OBO Bettermann Group

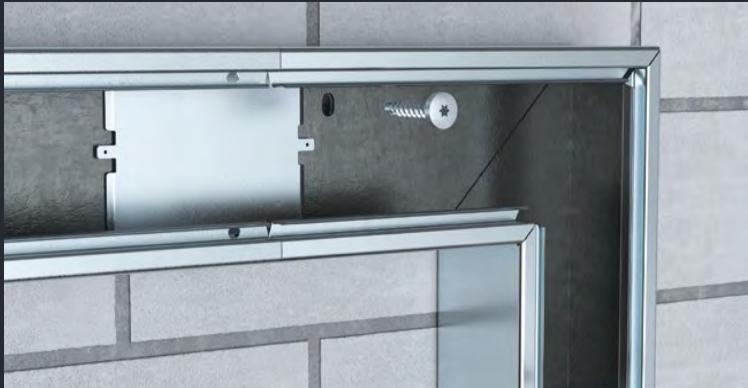
Overview of installation principle



Direct wall mounting



Suspended mounting on a mounting system



Direct wall mounting with flat angle



Suspended wall mounting with flat angles



Room corner mounting

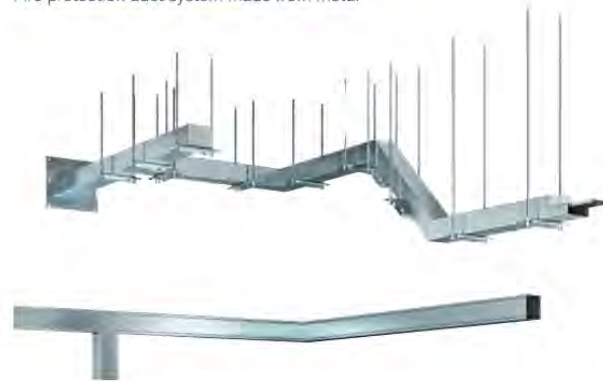
Selection Guides Available

PYRO FIRE PROTECTION RANGE

www.trenchltd.com | sales@trenchltd.com | 0121 544 7011

PYROLINE® Rapid PLM

Fire protection duct system made from metal



- A closed system made of sheet steel
- With a profiled cover closure contour, which, if there is an electrical cable fire, helps to protect the surrounding area by intumescent of the internal fire protection mesh
- In the event of a fire, the fire protection mesh provides active fire load encapsulation and prevents the spread of the fire
- Fire resistant
- Fulfills the classification according to EN 13501-2 EI30 - EI90
- System can be installed directly on the wall or ceiling
- Suspended mounting on different cable tray systems is also possible
- The installation duct is sealed on the inside through innovative connection technology with the patented internal connector
- No external impacts at joints are visible
- The connection technology also enables you to offset the duct trough and duct cover

Classification according to EN 13501-2




Fire resistance class	EI30 (ho I→o), EI60 (ho I→o), EI90 (ho I→o)
Proof of application	ETA-Damark, ETA-22/0096
Testing standard	EN 1366-5

PYROLINE FIREPROOF FAST FIX TRUNKING 100x80mm SYSTEM TO FIRE RATING EI30, EI60 AND EI90

Item no.	Description
 7218008	Metal installation duct with intumescent fire protection mesh for fireproof routing of cables
 7218030	Joint connector set, consisting of a connector for the duct base and cover support
 7218042	External corner with intumescent fire protection mesh for PYROLINE® Rapid PLM installation duct
 7218054	Internal corner with intumescent fire protection mesh for PYROLINE® Rapid PLM installation duct
 7218066	Flat angle with intumescent fire protection mesh for PYROLINE® Rapid PLM installation duct

Item no.	Description
 7218090	End piece with intumescent fire protection mesh to close the PYROLINE® Rapid PLM installation duct
 7218126	Wall connection collar, 4-sided, with integrated seal for PYROLINE® Rapid PLM installation duct
 7218154	Installation aid against cables falling out during wall mounting of the PLM D 0810 installation duct
 7218148	Installation aid against cables falling out during ceiling mounting of the PLM D 0810 installation duct
 7218180	Joint cover to hide sawn trunking joint edges

Item no.	Description
 7214741	Self-adhesive identification plate, for the labelling of fire resistant service ducts


Also available in a Pure White Finish RAL9010 and in the following sizes: 44x40mm | 100x40mm | 200x120mm

Building Connections

TRENCH

OBO Bettermann Group

Catalogue



Classified according to EN 13501-2

PYROLINE® Rapid PLM
Metal fire protection duct with ETA certification

OBO
BETTERMANN

The image shows a corner of a room with white brick walls and a grey ceiling. Several metal fire protection ducts are installed, running horizontally and vertically. A circular badge in the top right corner of the image contains the text 'Classified according to EN 13501-2'. A white shield icon is visible on the brick wall. The bottom half of the image is an orange gradient containing text and the OBO logo.



Route To Market

Architects

Consultants & Planners

M&E Contractors



Wholesale/Distribution Network

The brand that carries power

TRENCH

OBO Bettermann Group

CUSTOMER SUPPORT & MARKETING SUPPORT



Exhibitions

- Light & Build
- Architects at work
- EDA Conferences
- Many International Exhibitions



Local Support

- Trade counter presence
- Breakfast mornings
- In house training
- External sales visits



Publications & Social Media

- Catalogues
- Trade publications
- Website
- YouTube channels
- Social Media

The brand that carries power

TRENCH

OBO Bettermann Group

THANK YOU

Thank you for your time today.

I hope you found our products of interest. If there's any further information or support we can provide for you or your customers, please don't hesitate to contact us.

Rob Kendrick

Commercial Director

TRENCH

OBO Bettermann Group

Address

Unit 15, Vaughan Park
Sedgley Road East
Tipton, DY4 7UU

Email

rob.kendrick@trenchltd.com

Web: www.trenchltd.com

Phone

Office: +44 (0) 121 544 7011
Mobile: + 44 (0) 742 293 6257

