

# TRENCH

**OBO** Bettermann Group

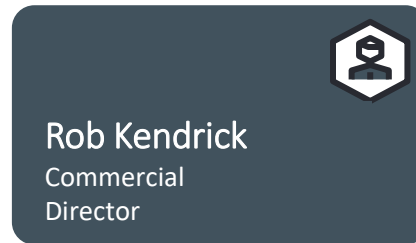
## Welcome

**EDA** ELECTRICAL  
DISTRIBUTORS'  
ASSOCIATION





**OBO** Bettermann Group



OBO Bettermann Group company Trench Ltd are a UK based steel cable containment manufacturer, supplying a vast array of products to the construction & renewable industries.

In 2015 world leading manufacturer OBO Bettermann acquired Trench Ltd providing the perfect scenario to expand upon their excellent global reputation for quality & service in the construction & renewable industries.

To compliment Trench Ltd's 20+ years of manufacturing steel cable containment, OBO Bettermann carry an extensive product portfolio of some 33'000 lines, with many of them leaning towards the construction & renewable industries including, Cable Management, Fire Protection, Lightning Protection Systems & Surge Protection Devices.

In provision of our vast product offering, we offer a huge array of support including, Project planning at every phase, (AutoCAD, REVIT, STEP), Product BIM Modelling and typicals.



**Trench Ltd (UK)**  
10,000 m<sup>2</sup>



**OBO Bettermann  
(Germany HQ)**  
160,000 m<sup>2</sup>



**OBO Bettermann Hungary**  
105,000 m<sup>2</sup>



**OBO** Bettermann Group

- ❑ **Trench Ltd 2001 Incorporated**
- ❑ **Steel containment manufacturer**
- ❑ **2015 Acquired by OBO Bettermann**
- ❑ **Global operation**
- ❑ **Additional 33'000 products**
- ❑ **International Technical support**
- ❑ **Project and planning support**
- ❑ **Distribution network support**
  
- ❑ **OBO Bettermann Grp Turnover €950m+**

# Company History

1911



Founding of sheet metal factory for fastening technology and external lightning protection

1952



“Ohne Bohren” (no drilling) – innovative metal anchors come onto the market. The OBO brand name is born.

1959



The OBO man goes global as a popular figure and a synonym for installation technology.

1986



Internationalisation: OBO grows, from Philadelphia to Beijing, from Helsinki to Johannesburg.

1992



Foundation of OBO Bettermann Hungary Kft. near Budapest. Today it is the largest production and logistics side of the whole OBO Group.

2006



OBO continues the portfolio of the Ackermann company, founded in 1919, and becomes the market leader for underfloor systems and a leading system provider in cable management.

2011



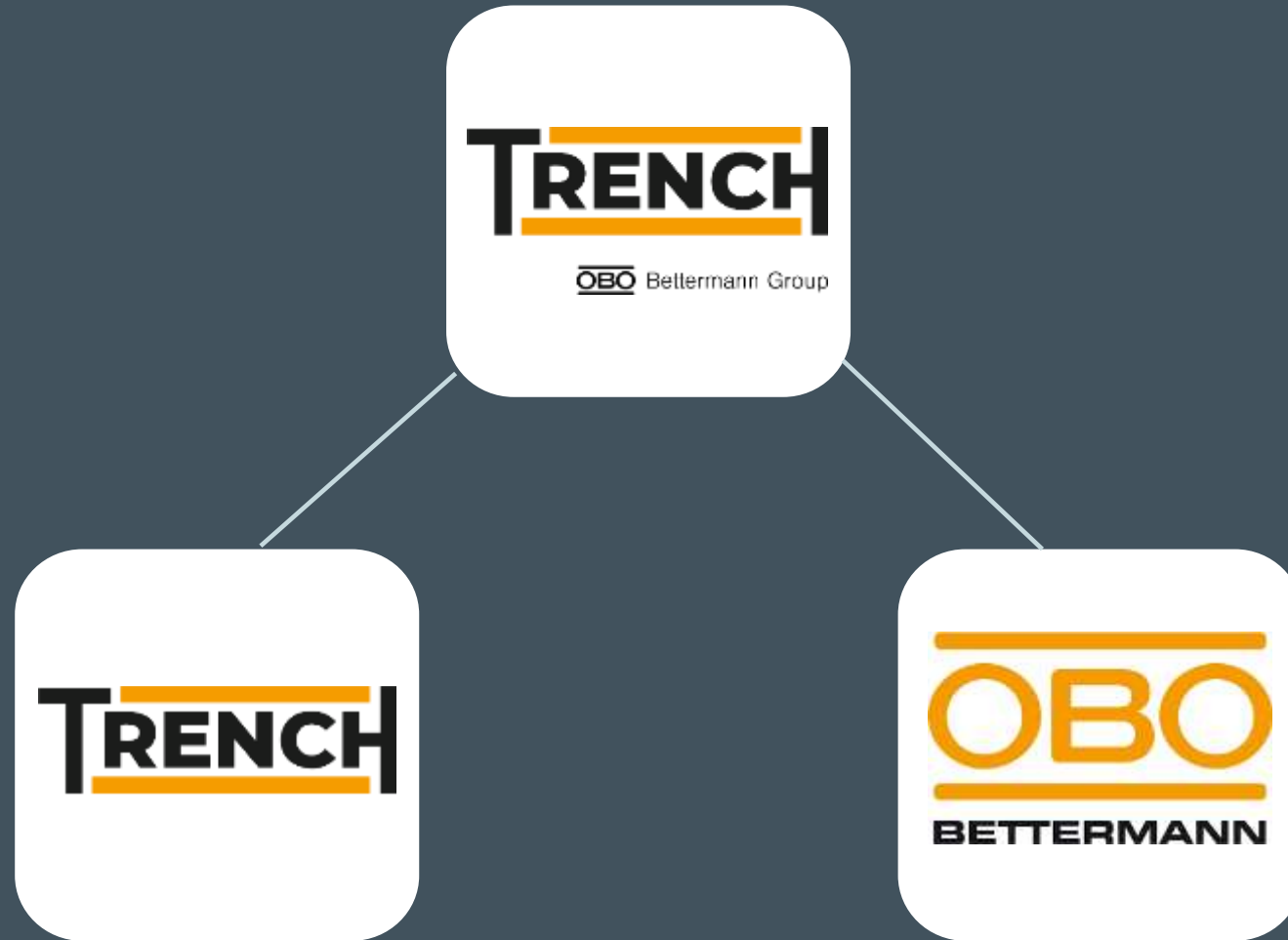
OBO celebrates its 100th anniversary! And just in time for the anniversary, the metal competence centre is completed and operations start.

2015



OBO Bettermann acquires Trench Ltd as a market leader in the field of “British Standard Trunking” and therefore a valuable addition for OBO.

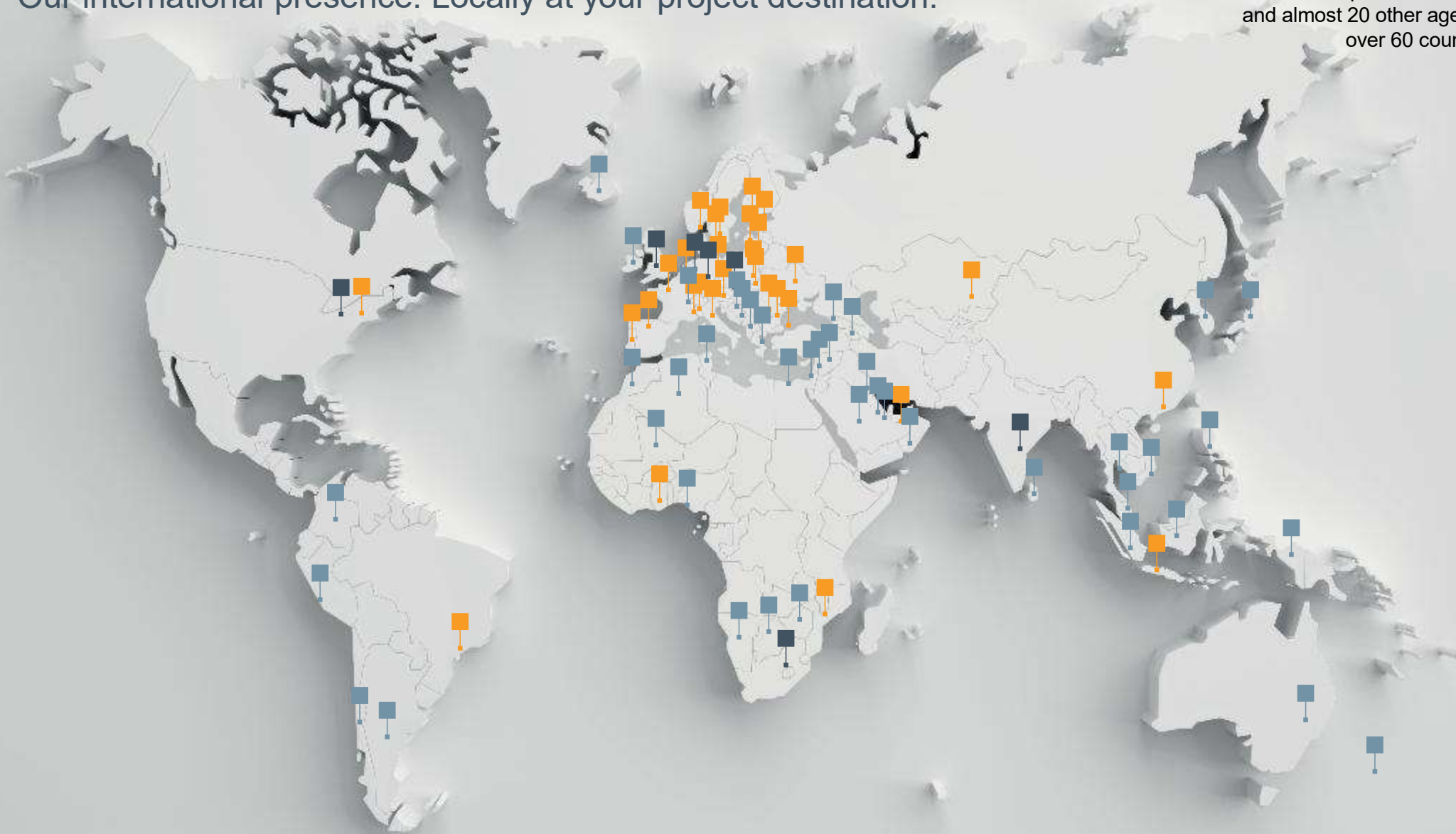
# Trench Ltd – Company Brands



## Over 100 years of experience.

Our international presence. Locally at your project destination.

At OBO, regional connections meet a global presence. We now generate more than half of our total sales abroad. With 7 production companies, 40 subsidiaries and almost 20 other agents, we are represented in over 60 countries across all continents.



## Key Facts:

**30,000** 

products are produced by OBO for electrotechnical infrastructures.

**35%** 

of all OBO products are less than five years old.

**3** 

OBO installation areas: Industrial, Building, and Safety and protection.

**60** 

countries around the world in which OBO is represented.

**4,200** 

employees around the world.

**5,900,000,000**



OBO anchors® have been produced since 1952.

**9,800** 

tonnes reduction in CO2 emissions per year at our location in Menden.

**832** 

patents are owned by OBO for its products.

**2,000** 

kilometres of cable ladders are produced every year at the Menden site.

**45%** 

less paper use in the last ten years!

**15** 

years – that is the average length of employment at OBO.

**111** 

years of enthusiasm! OBO has a long history of success.



# Underfloor Systems

The brand that carries power

**TRENCH**  
OBO Bettermann Group

# Examples of Underfloor System Applications



Office



Residential



Hotels



Car Showrooms



Airports



Museums

The brand that carries power

**TRENCH**

OBO Bertermann Group

# Classification according to EN 50085-2-2 & IEC 61084

Underfloor cable management systems must be classified according to:

- Resistance to vertical load applied through small surface area
- Resistance to vertical load applied through large surface area
- Temperatures for storage (min) and application (min and max)
- Resistance to flame propagation
- Electrical continuity characteristics
- Electrical insulation characteristic
- Degrees of IP protection
- Floor treatment



The brand that carries power

**TRENCH**

OBO Bettermann Group

# Floor Cleaning

## Dry care

No liquids are used for the cleaning of floor coverings, i.e. vacuum.

## Damp care

The use of damp cloths or wipes to clean the floor surface.

## Wet care

When cleaning floors using liquids and applicators such as mops or commercial cleaning machines.



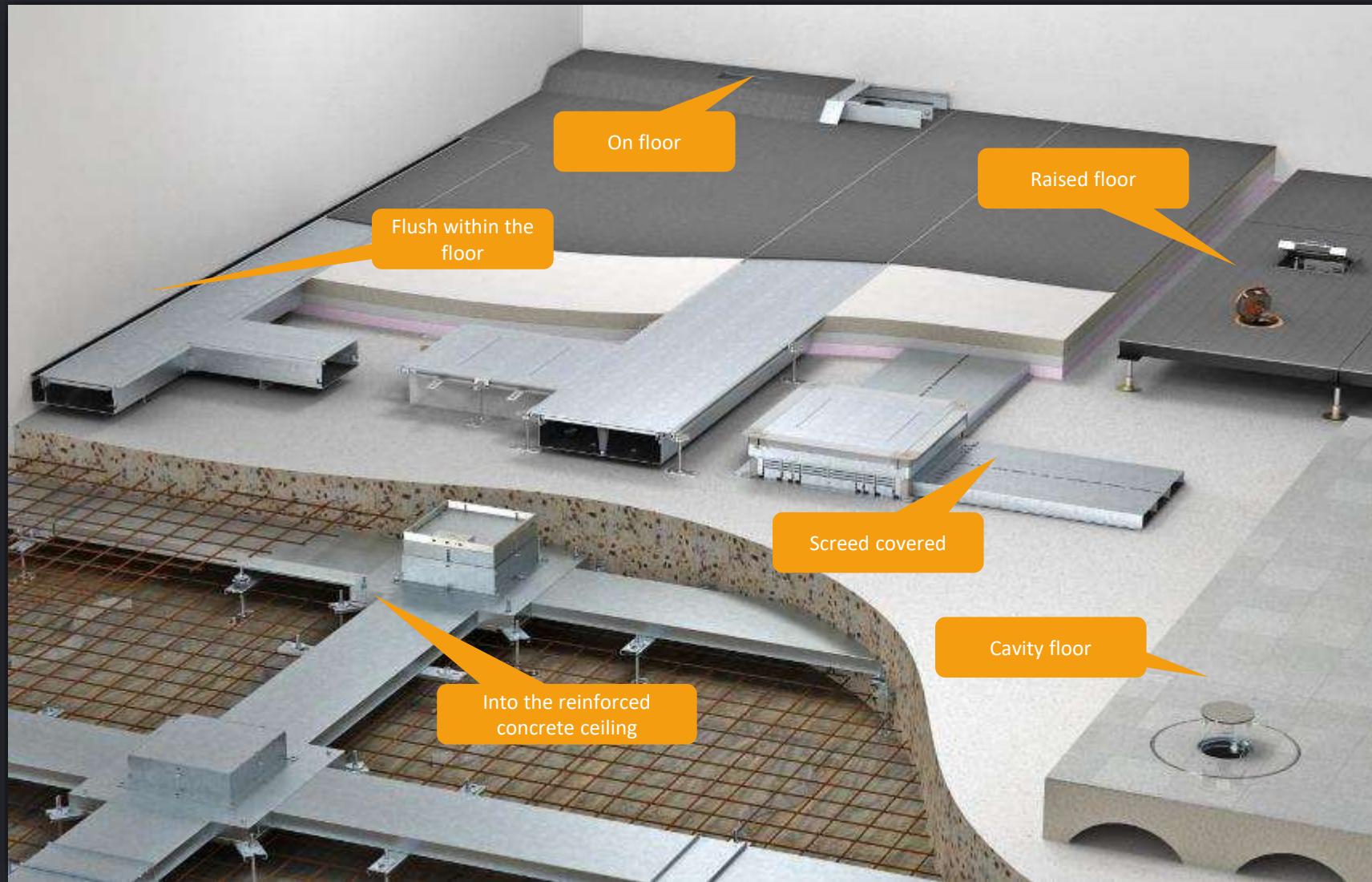
# Protection ratings to IP and IK

## Ingress & Impact

Product	IP when used	IP when unused	IK
Plastic GES	20	40	8
Stainless steel GESM	20	40	10
Metal GRAF9	20	65	10
Cassette, cord outlet RKS	20	40	10
Cassette, tube body RKF	20	65	10
Cassette, blank	20	65	10
UDHOME	20	40	10
UDHOME tube body	20	65	10
GES R2	20	66	10



# Underfloor Systems



The brand that carries power

**TRENCH**

OBO Bertermann Group

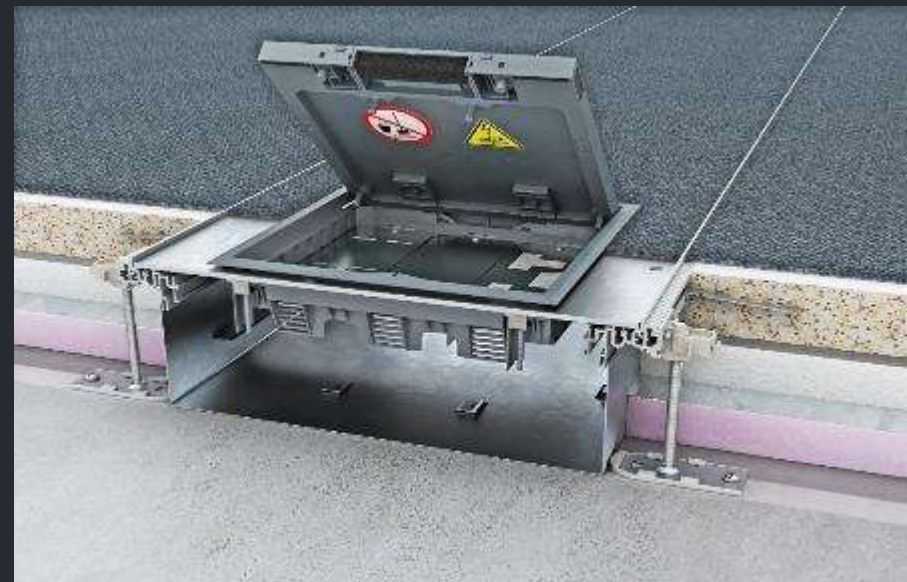
# Choosing the Correct System

Considerations to be made when selecting your underfloor system.



Underscreed System

- Customer requirement/flexibility
- Floor construction type
- Floor heights
- Sound transmission
- Load-bearing factors
- Cable capacity
- Wet or dry cleaned floor – use of cleaning machines
- Fire protection requirements



Flush Floor System



# Underscreed Trunking System

The brand that carries power

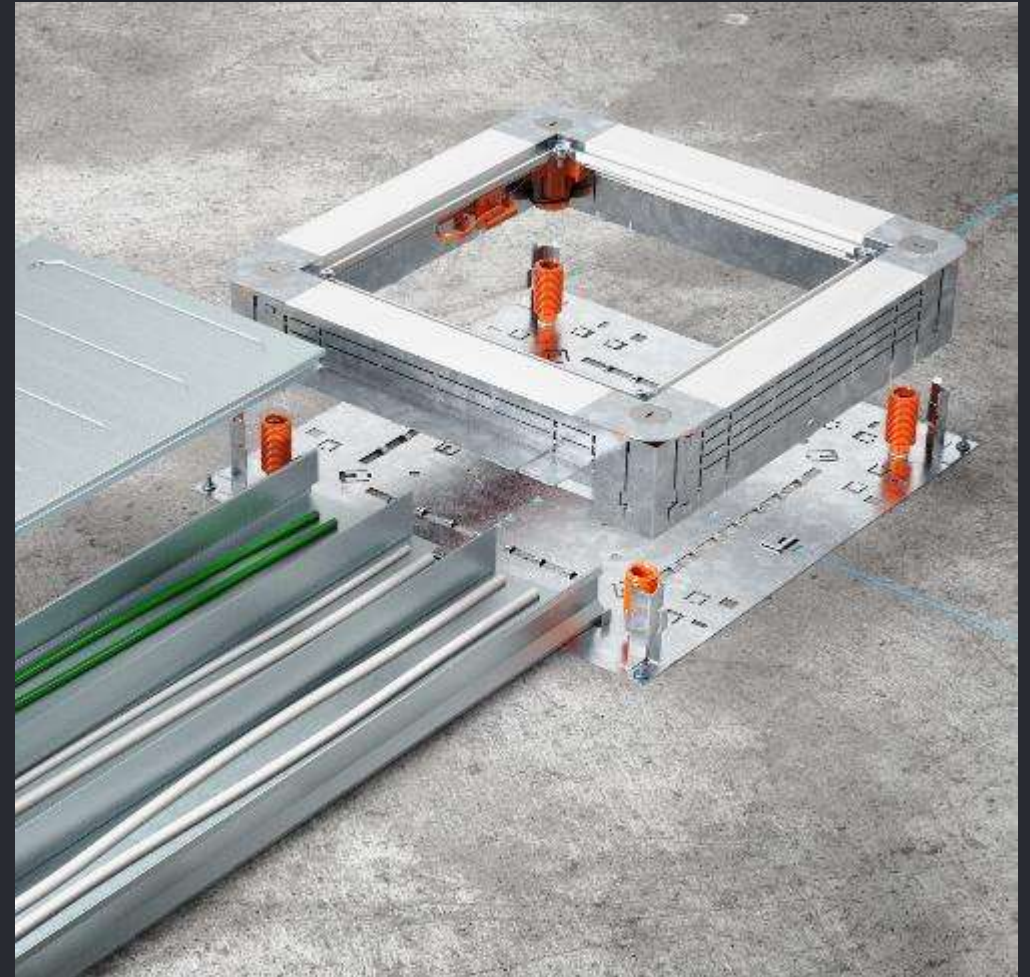
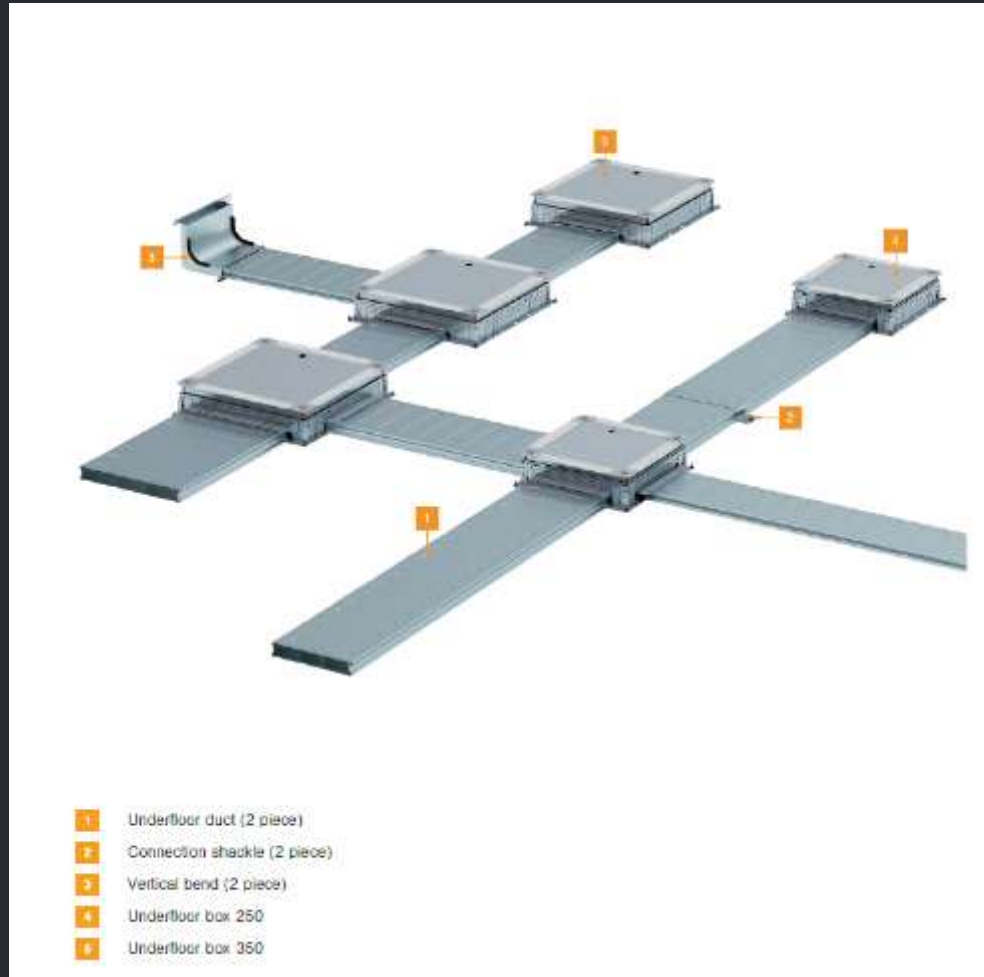
**TRENCH**  
OBO Bettermann Group

# EÜK – Underscreed Trunking System

- For use with many types of screed.
- Various size options, with two or three compartments for the separation of power and data cables
- Can be used in conjunction with underfloor heating
- 2-part channel system with removable top cover, for ease of installation
- Heavy-duty options available
- A wide range of floor height flexibility
- Soundproof – decoupled system to reduce the transmission of sound



# Service Outlets & Junction Boxes



The brand that carries power



**TRENCH**

OBO Bollermann Group

# Underfloor solution for high-quality Terrazzo floorings

Floor box installed with a decoupled trimless cassette outlet.

- 100 % acoustic decoupling
- No expansion joint
- Solution for heated floors
- Heavy duty load bearing
- For wet & dry floor cleaning
- Height adjustable system



The brand that carries power

**TRENCH**

OBO Bollermann Group

# Flushfloor Trunking System



The brand that carries power

# OKA-T - Flushfloor Trunking System

## System Features

- Can be opened and accessed once installed
- Service outlets can be added or repositioned at any time

## System Sizes

- The system height of the OKA-T trunking system is fixed at 65mm
- 300mm & 400mm widths are available



# Flush Floor Trunking System – Typical Installation

## Trunking lids

3 x 800mm lids are provided per length. Lids with service outlet cut-outs are available to provide flexibility within the system.



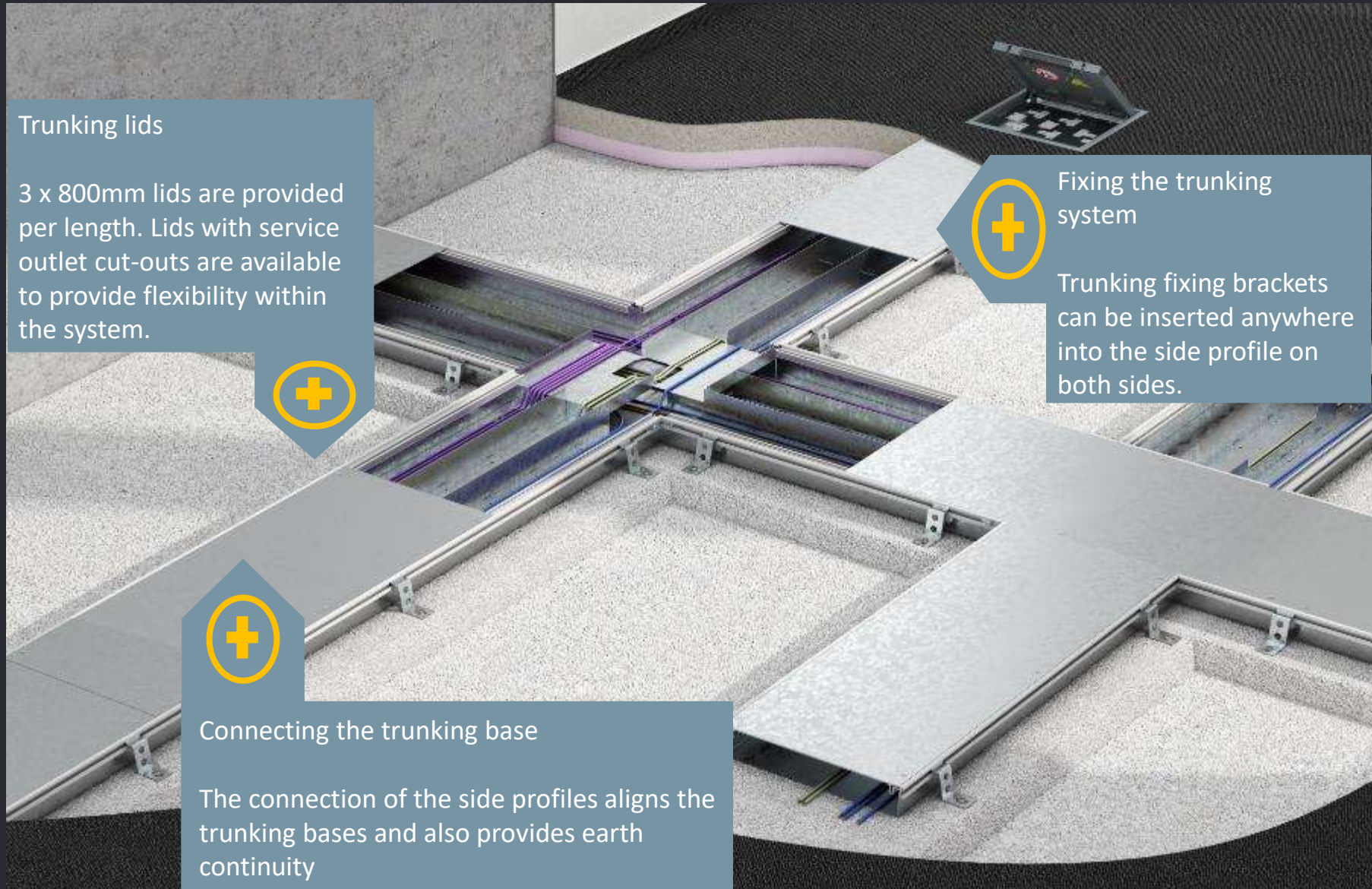
Fixing the trunking system

Trunking fixing brackets can be inserted anywhere into the side profile on both sides.



Connecting the trunking base

The connection of the side profiles aligns the trunking bases and also provides earth continuity





# Cassettes & Service Outlets

The brand that carries power

# Cassette Solutions

## Height-Adjustable Cassettes

- Universal application can be used across most underfloor trunking systems.
- Height-adjustable - can be adjusted precisely to the top edge of the finished floor covering.
- Can be decoupled to reduce the transmission of sound.
- Can be fastened to a raw concrete base using height adjustment feet.



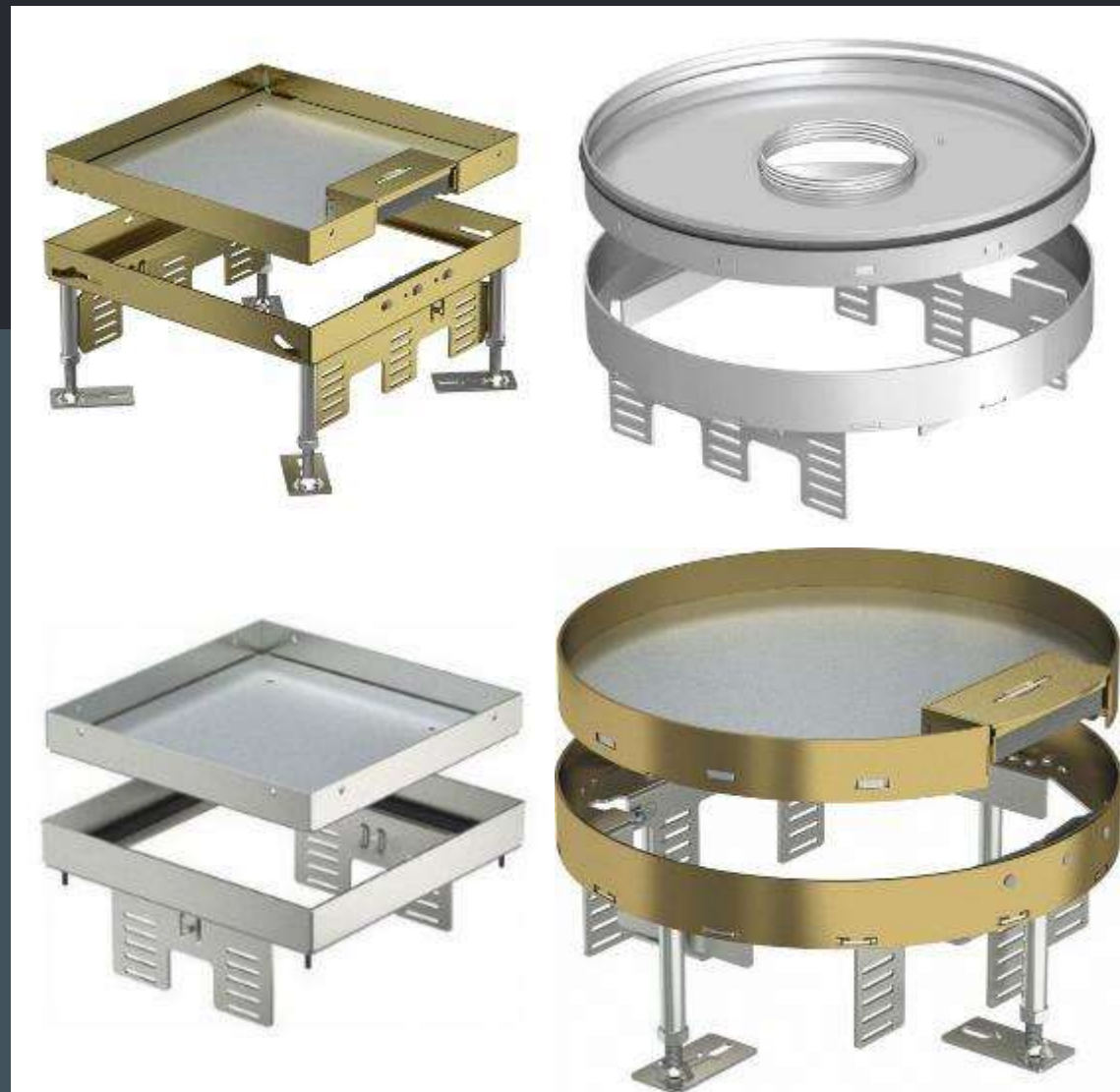
The brand that carries power

**TRENCH**

OBO Bollermann Group

# Trimless Cassette Solutions

- Easy access
- For high loads
- High quality materials – Stainless Steel & Brass
- Variety of floor inlays
- Rectangular and round versions
- For dry and wet cleaned floors
- Decouplable to reduce the transmission of sound
- Compatibility with any underfloor systems i.e. underscreed and flushfloor



The brand that carries power

**TRENCH**

OBO Bollermann Group

# GES Service Outlets

- Easy access
- Can be used in cavity floors
- 4 sizes of rectangular version
- 3 sizes of round version
- Made of polyamide and stainless steel
- Compatibility with most underfloor systems i.e. underscreed and flushfloor
- Solutions for wet and dry cleaned floors
- Variety of floor inlay



The brand that carries power

**TRENCH**

OBO Bollermann Group

# Cassette Accessories



Socket Outlets



Data Plates



Blank Plates

\*Data and multimedia modules are available



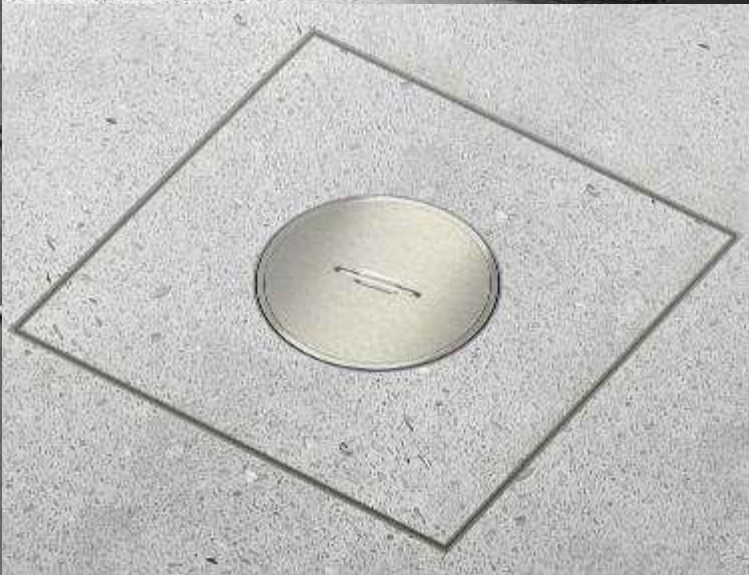
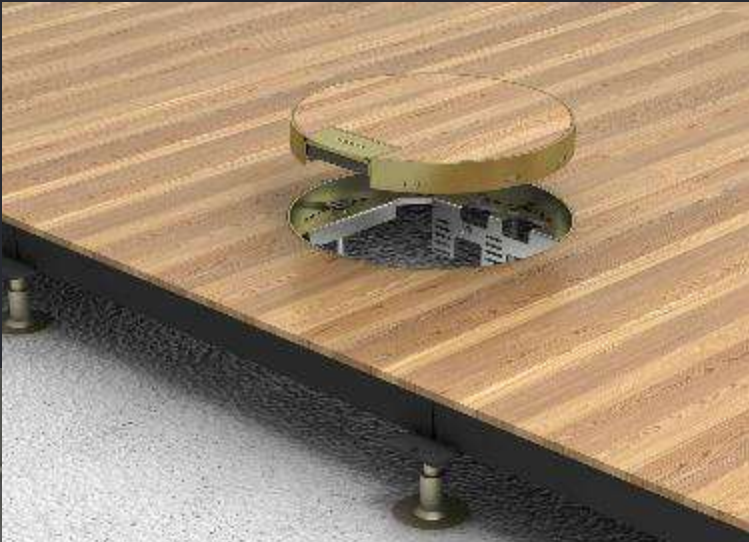
The brand that carries power



**TRENCH**

OBO Böttermann Group

# Cassette Examples



The brand that carries power



OBO Bollermann Group



# Brush Bar Trunking System

The brand that carries power

# Discreet Brush Bar Trunking System

- Aesthetic in appearance
- Continuous with many finished floor coverings
- Flexible, discreet perimeter brush bar cable outlet
- Accessible system post-installation
- 2-compartments
- Height adjustable



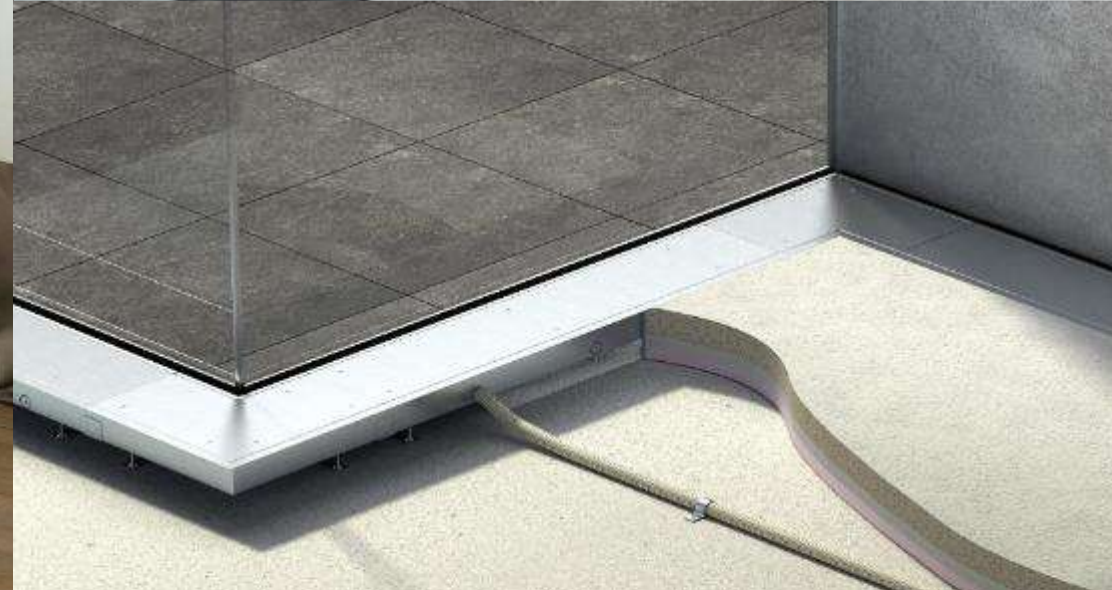
The brand that carries power

© 2017 OBO Bettermann Group

**TRENCH**

OBO Bettermann Group

**Ideal for panoramic glass windows or office partitioning**



The brand that carries power



**TRENCH**

OBO Bettermann Group

# UDHome & Grommets



The brand that carries power

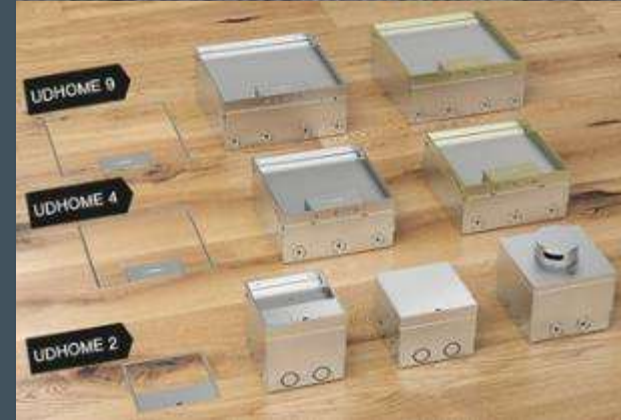
# UDHome: Standalone Solutions



# UDHOME floor boxes

Elegant, Discreet & Robust

- Standalone unit
- High-quality materials and machining
- Stainless Steel, Brass, Aluminium
- 3 sizes available
- Multiple options for power, data and multimedia outlets
- Adjustable height with optional height compensation set
- 20mm and 25mm conduit entries
- Available empty or pre-equipped as well



The brand that carries power

**TRENCH**

OBO Bettermann Group

The UDHOME9 is available in stainless steel and brass versions.



Dimensions  
Body: 243 mm x 243 mm  
Screed height: 95–110 mm  
Floor height: 95–125 mm  
Optional height extension



The UDHOME9 is the largest floor box of the UDHOME family. It combines restrained design with a wide range of use options.

# GES R2 Floor Grommets

Elegant, Discreet & Robust

- Heavy duty die cast zinc outlet
- 5 outlet cover designs
- 7 colours available
- Power, data & multimedia accessories available
- Small and compact
- Suitable for dry or wet-cleaned areas
- Available in plastic
- Anti-tamper version available
- Suitable for in-screed and cavity floors



The brand that carries power

**TRENCH**

OBO Bettermann Group

# GESR2: Modular Series

## Choose cover

The classic service outlet for the GES R2 floor socket is available in various designs and colours.

## Mounting Socket

The installation mounting socket is provided in an empty state, enabling for various socket and multimedia options to be installed.

The mounting socket can be used for screed or cavity floors.

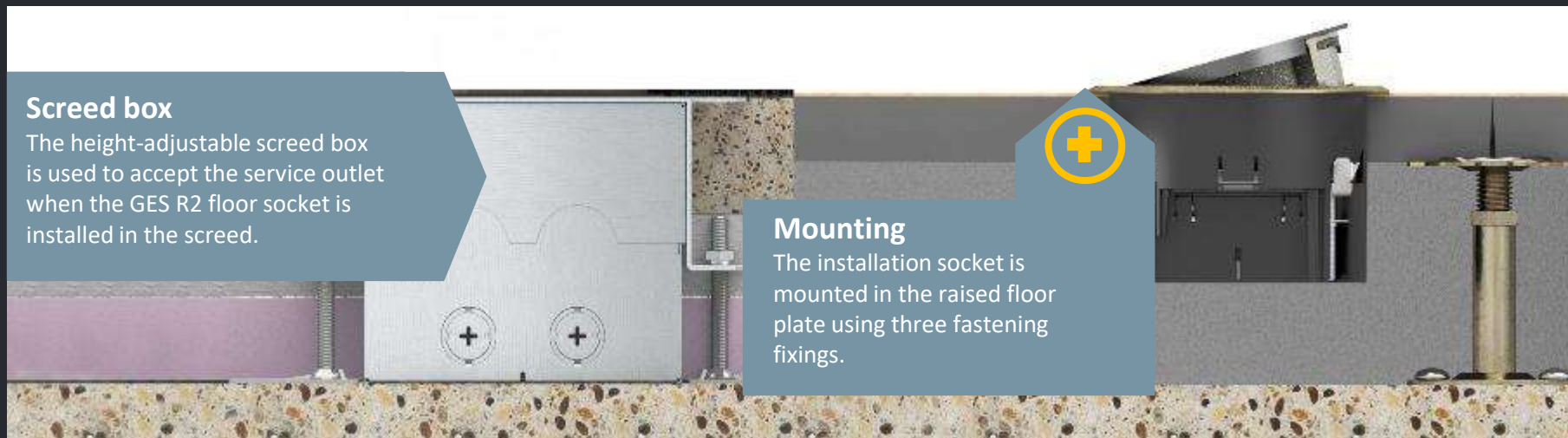


## Screed box

The height-adjustable screed box is used to accept the service outlet when the GES R2 floor socket is installed in the screed.

## Mounting

The installation socket is mounted in the raised floor plate using three fastening fixings.



# GESR2: Tubular & Anti-Tamper



# GESR2: Hinged Lid



The brand that carries power

# Selection Guides Available

## Selection Guide for Underscreed Trunking and Service Outlet Boxes size 250-3

www.trenchhd.com | sales@trenchhd.com | 0121 544 7011

**Trunking**

**Service outlet boxes**

**Accessories**

**Dimensions**

**Material**

**Color**

**Finish**

**Weight**

**Installation**

**Notes**



Building Connections

## Device installation and accessories

www.trenchhd.com | sales@trenchhd.com | 0121 544 7011

### Device installation, nominal size 6

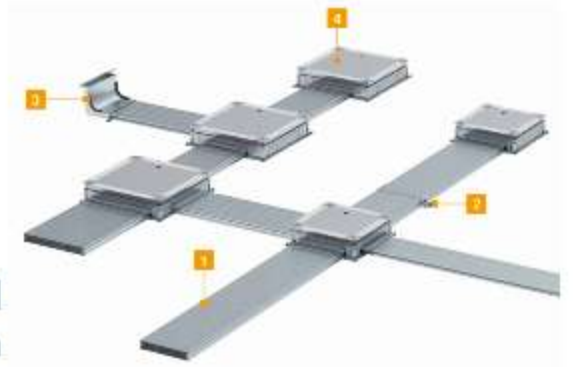
	Mounting plate	Cover plate	Cover plate	35 access with cover
Type	MT 6 M2	AP 312 6	AP 312 6	AP 312 6 350
Material	Aluminum	Aluminum	Aluminum	Aluminum
Size (mm)	100 x 100	100 x 100	100 x 100	100 x 100

### Device installation, nominal size 8 and RS

	Mounting plate	85 cover plate	85 cover plate	85 cover plate	85 cover plate
Type	MT 8 M2	AP 312 8	AP 312 8 RS	AP 312 8	AP 312 8
Material	Aluminum	Aluminum	Aluminum	Aluminum	Aluminum
Size (mm)	100 x 100	100 x 100	100 x 100	100 x 100	100 x 100

### Accessories

	Underfloor junction box	Underfloor junction box	Underfloor junction box	Underfloor junction box
Type	UB 6	UB 8	UB 8 RS	UB 8 RS
Material	Aluminum	Aluminum	Aluminum	Aluminum
Size (mm)	100 x 100	100 x 100	100 x 100	100 x 100



- 1 Underfloor junction box
- 2 Connection plate
- 3 Work plate
- 4 Underfloor junction and handle box (50 x 100)



Consultation available on request. For more information contact your Trench sales team.



Building Connections

The brand that carries power



OBO Bockermann Group

# Catalogues



The brand that carries power

# Fire Protection Trunking



The brand that carries power

**TRENCH**

OBO Bettermann Group

# PYROLINE® Rapid PLM

The PYROLINE® Rapid PLM harmonises visual and technical fire protection requirements perfectly.

A flexible and discreet fire protection solution – ideal for new buildings and refurbishment projects.

Hospitals, Social Housing, Communal areas.

Uniquely intelligent safety system that's approved to the classification EN13501-2. achieving the fire ratings of EI30/EI60/EI90 and E120.



The brand that carries power

**TRENCH**

OBO Bockermann Group

# Fire protection test and classifications

1. Classification of the fire resistance of the entire installation according to EN 13501-2
  - EI30 ( $h_o \leftrightarrow o$ ), EI60 ( $h_o \leftrightarrow o$ ), EI90 ( $h_o \leftrightarrow o$ ), EI120 ( $h_o \leftrightarrow o$ )
2. Classification of the fire behaviour according to EN 13501-1
  - A2-s1, d0
3. Fire test on installation ducts according to DIN EN 1366-5



The brand that carries power

**TRENCH**

OBO Bettermann Group

# Comprehensive Catalogue Portfolio

- Closed, sheet steel system
- Internally lined with a fire protection mesh
- Wide portfolio of components and accessories for almost any installation



The brand that carries power

# Four Dimensions



40 x 44



40 x 100



80 x 100



120 x 200

The brand that carries power

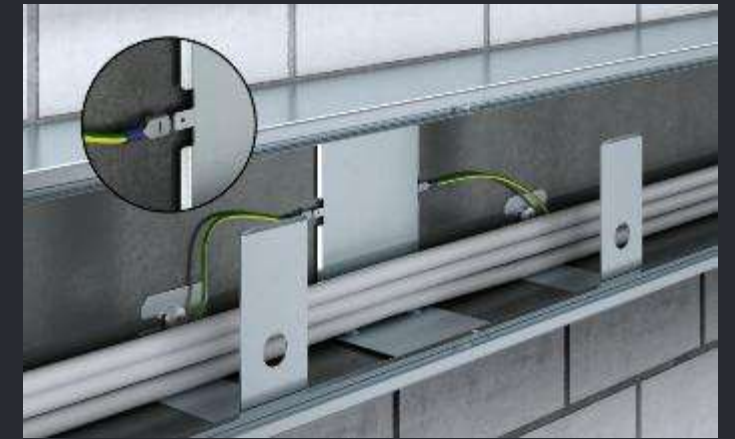
**TRENCH**

OBO Böttermann Group

# Safety that adapts to the architecture



Pressure clip for safe cable routing



Equipotential bonding possible between segments



Version in powder coating RAL 9010



Version in strip-galvanised sheet steel



Sealing through internal connection

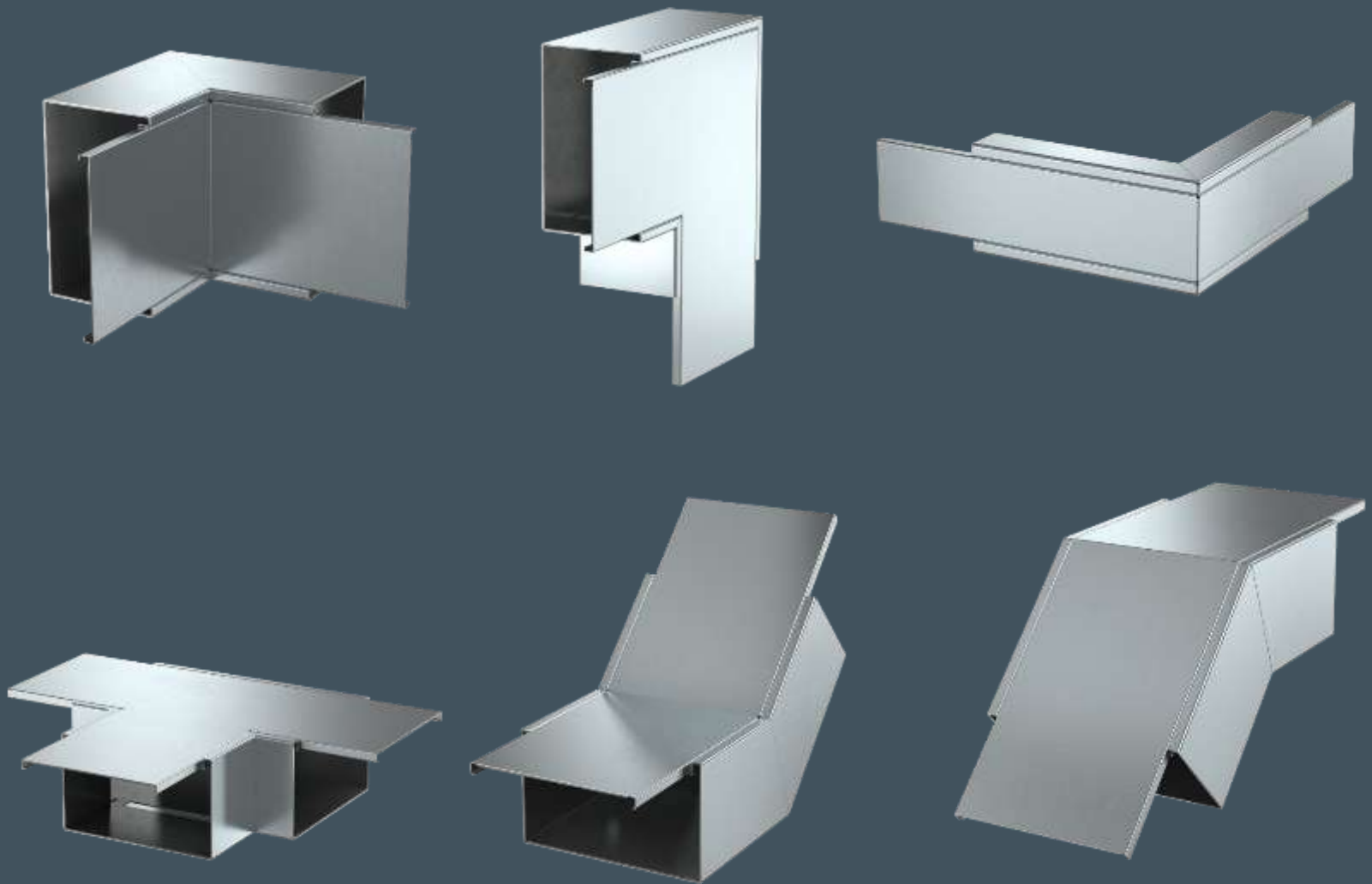
The brand that carries power

**TRENCH**

OBO Bettermann Group

# Factory-made fittings

Simple changes of direction  
for all trunking sizes

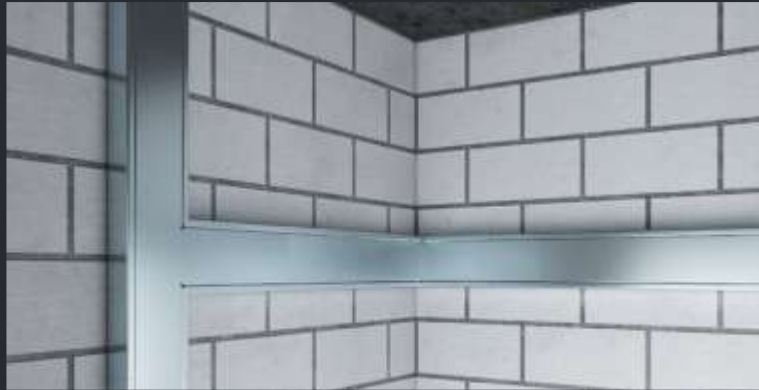


The brand that carries power

**TRENCH**

OBO Berthmann Group

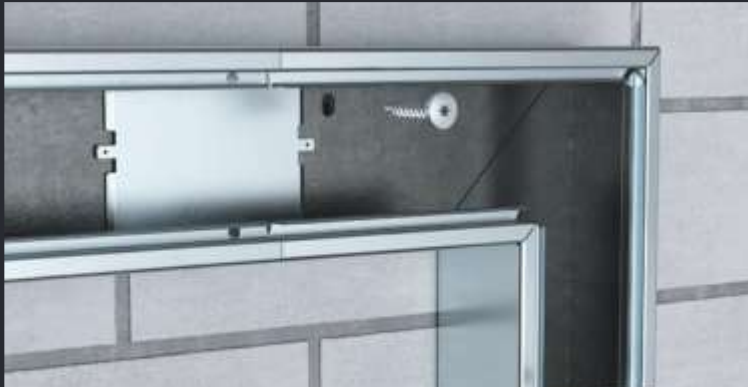
# Overview of installation principle



Direct wall mounting



Suspended mounting on a mounting system



Direct wall mounting with flat angle



Suspended wall mounting with flat angles



Room corner mounting

# Selection Guides Available

## PYRO FIRE PROTECTION RANGE

www.trenchhd.com | sales@trenchhd.com | 0121-544-7011

### PYROLINE® Rapid PLM

Fire protection duct system made from metal



- A clipped system made of sheet steel
- With a profiled cover it runs on a concrete, which, if there is no structural cable tray, helps to protect the surrounding area by its heat resistance of the internal fire protection mesh
- In the event of a fire, the fire protection mesh prevents active fire heat escalation and prevents the spread of the fire
- Fire resistant
- Fully fire resistant according to EN 13501-2 (E30 - E90)
- System can be installed directly on the wall or ceiling
- Suspension mounting on different cable tray systems is also possible
- The installation duct is sealed on the inside through innovative connection technology with the associated internal connector
- No external impact joints are visible
- The connection technology also enables you to cut off the duct through and duct cover

Classification according to EN 13501-2



Fire resistance class	E30 (30 min), E60 (60 min), E90 (90 min)
Proof of application	ETA-1200/000, ETA-220/000
Testing standard	EN 13655

Building Connections

### PYROLINE FIREPROOF FAST FIX TRUNKING 100x80mm SYSTEM TO FIRE RATING EI30, EI60 AND EI90

Item no.	Description
 7218008	Metal installation duct with integrated fire protection mesh for fireproofing of cables
 7218030	Joint connector set, consisting of a connector for the duct base and cover support
 7218042	External corner with integrated fire protection mesh for PYROLINE Rapid PLM installation duct
 7218054	Internal corner with integrated fire protection mesh for PYROLINE Rapid PLM installation duct
 7218066	Flat angle with integrated fire protection mesh for PYROLINE Rapid PLM installation duct

Item no.	Description
 7218090	End piece with integrated fire protection mesh to close the PYROLINE Rapid PLM installation duct
 7218126	Wire connection cable (4-core), with integrated seal for PYROLINE Rapid PLM installation duct
 7218154	Installation set up at cables falling out during wall mounting of the PYROLINE Rapid PLM installation duct
 7218148	Installation set up at cables falling out during ceiling mounting of the PYROLINE Rapid PLM installation duct
 7218180	Joint piece to close open trunking (4-core)

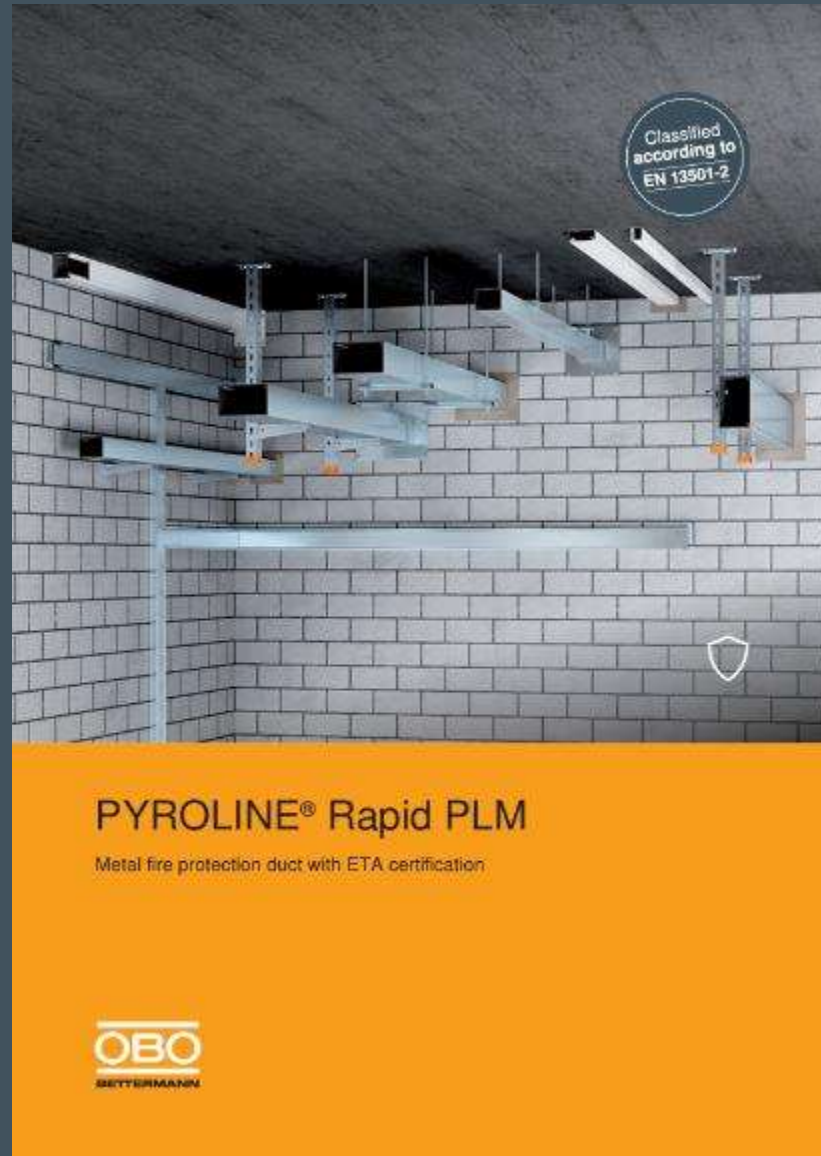
Item no.	Description
 7214741	Self-adhesive identification plates for the labeling of fire resistant revision ducts

Also available in a Pure White finish RAL9010 and in the following sizes:  
4x100mm | 100x100mm | 100x150mm

**TRENCH**

OBO Belfermann Group

# Catalogue

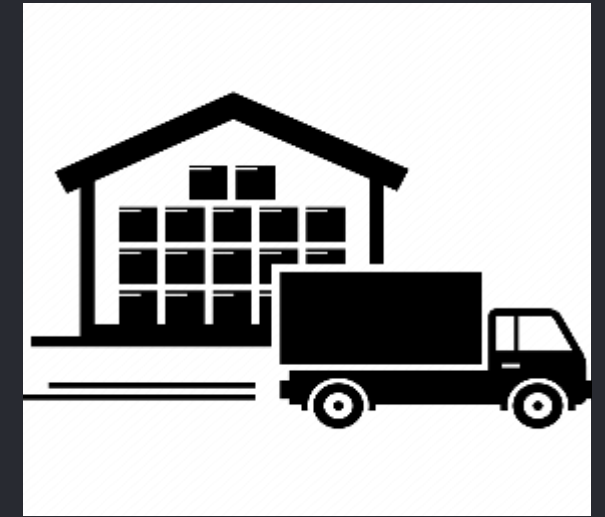


# Route To Market

**Architects**

**Consultants & Planners**

**M&E Contractors**



Wholesale/Distribution Network

The brand that carries power

**TRENCH**

OBO Bertermann Group

# CUSTOMER SUPPORT & MARKETING SUPPORT



## Exhibitions

- Light & Build
- Architects at work
- EDA Conferences
- Many International Exhibitions



## Local Support

- Trade counter presence
- Breakfast mornings
- In house training
- External sales visits



## Publications & Social Media

- Catalogues
- Trade publications
- Website
- YouTube channels
- Social Media

The brand that carries power

# THANK YOU

Thank you for your time today.

I hope you found our products of interest. If there's any further information or support we can provide for you or your customers, please don't hesitate to contact us.

**Rob Kendrick**

Commercial Director

**TRENCH**

OBO Betterman Group

**Address**

Unit 15, Vaughan Park  
Sedgley Road East  
Tipton, DY4 7UU

**Email**

rob.kendrick@trenchltd.com

**Web:** [www.trenchltd.com](http://www.trenchltd.com)

**Phone**

Office: +44 (0) 121 544 7011  
Mobile: + 44 (0) 742 293 6257

