



The Future of Training

Tracy Hewett

Head of Education and Training, EDA



PRINCESS ROYAL
TRAINING AWARD
2022



EDA

Welcome to the



EDA ACADEMY

Log in

Username

thewett

Password

.....

Remember username

Log in

[Forgot username or password?](#)



COURSE

100%

01.1 Intro to Principles of Electricity Course

Product Knowledge Modules

EDA

ASSESSMENT

0%

01.2 Intro to Principles of Electricity Assessment

Product Knowledge Modules

EDA

COURSE

14%

02.1 Lighting (Introduction) Course

Product Knowledge Modules

EDA

ASSESSMENT

0%

02.2 Lighting (Introduction) Assessment

Product Knowledge Modules

EDA

COURSE

11%

03.1 Lighting (Systems and Controls) Course

Product Knowledge Modules

EDA

ASSESSMENT

03.2 Lighting (Systems and Controls) Assessment

Product Knowledge Modules

EDA

COURSE

0%

04.1 Cables and Cable Management Course

Product Knowledge Modules

EDA

ASSESSMENT

100%

04.2 Cables and Cable Management Assessment

Product Knowledge Modules

EDA

COURSE

06.1 Distribution, Switchgear and Protection Course

Product Knowledge Modules

EDA

ASSESSMENT

06.2 Distribution, Switchgear and Protection Assessment

Product Knowledge Modules

EDA

COURSE

12.1 Customer Services Course

Product Knowledge Modules

EDA

ASSESSMENT

100%

12.2 Customer Services Assessment

Product Knowledge Modules

EDA



Embracing Diversity Is Good For Your Business

Forbes article summarising, from a leadership ...



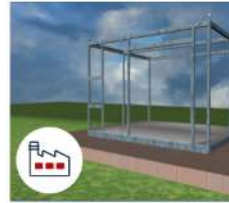
Delivering through Diversity

McKinsey summary of 2018 research into business benefits ...



Crossrail Ltd: Diversity and inclusion in H&S

How Crossrail Ltd made the connection between FIR and ...



Building a safer future

Independent review of building regulations and fire safety



Implementing the 5S Methodology

Implementing the 5S Methodology: The first steps towards ...



Employing staff for the first time

The basic steps that every business must take when they ...

[SHOW MORE](#)



REAL CONTENT

Motivating Your Team

Create a motivating workplace and spark your team's best work with new t...



REAL CONTENT

Transitioning to Remote Work

Guide your team through the transition from working in the office to working from home.



REAL CONTENT

How Great Leaders Solve Problems

Learn to lead your team to new heights of creative problem-solving.



REAL CONTENT

Leading With Emotional Intelligence

Develop emotional intelligence by expanding your personal and social co...




Dashboard / My courses / Distribution Switchgear Protection



Welcome to the



EDA ACADEMY




DISTRIBUTION, SWITCHGEAR AND PROTECTION

Part of the EDA Electrical Product Knowledge Programme




Your progress 1



Distribution, Switchgear and Protection

This interactive e-learning course has been created from the EDA product knowledge module book, originally produced by the sector for the sector in 2018 and updated in 2021. Should you wish to read the original materials you can download the full book here. Alternatively you can purchase a printed copy from the EDA. Contact the training team to enquire.

Before you start the course ...

Check out this important information before you start the learning.

Recovery and Recycling of Electrical Waste

Do you know where the recycling bins are and your organisational policies on electrical waste? This is important information to know and understand before you start the course.

Be Counterfeit Savvy

You might have a customer ask why the products you're suggesting are so much more expensive than, say, a product from an on-line retailer. Or, at some point in your career in wholesale, you might be approached directly from an importer of products, wishing you to stock their very attractively priced products. Be sure to check out they are not counterfeit and they are compliant.

Introduction

Generation transmission and distribution

Distributing electricity within a property

Not available unless: The activity **Generation transmission and distribution** is marked complete.

Protection and control devices

Not available unless: The activity **Distributing electricity within a property** is marked complete.

Additional protection

Not available unless: The activity **Protection and control devices** is marked complete.

Supply and metering

Not available unless: The activity **Additional protection** is marked complete.

Specialist applications

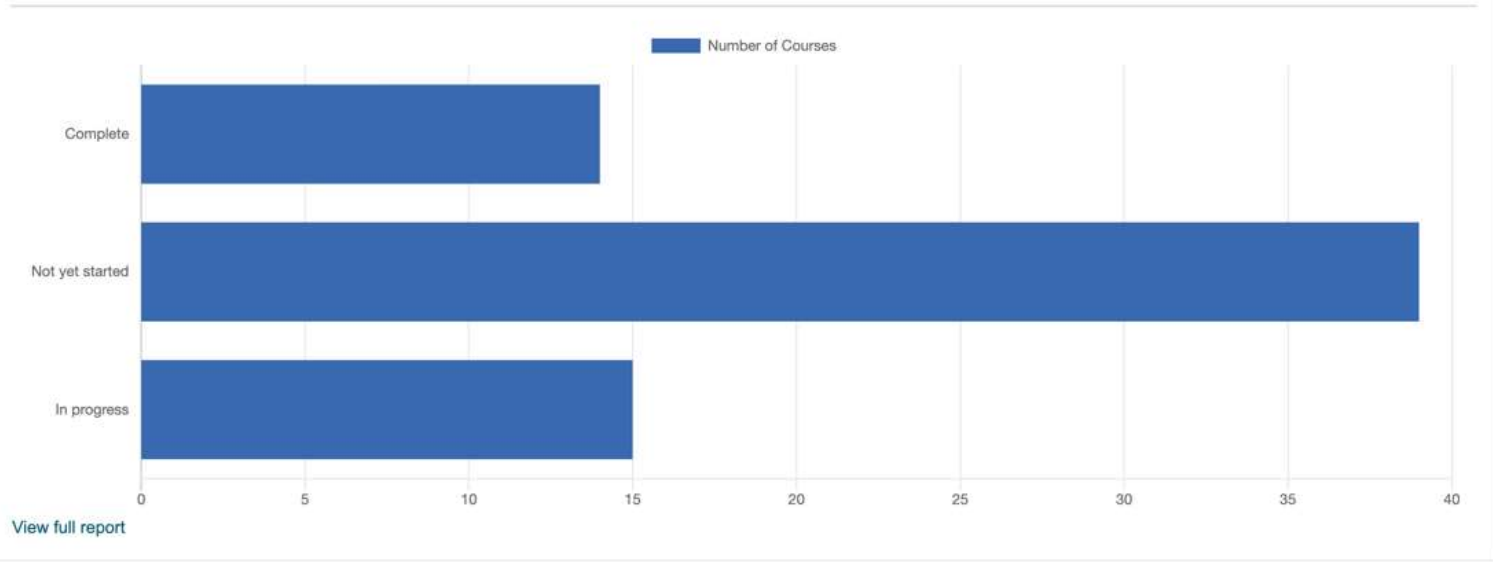


Dashboard / Manager dashboard

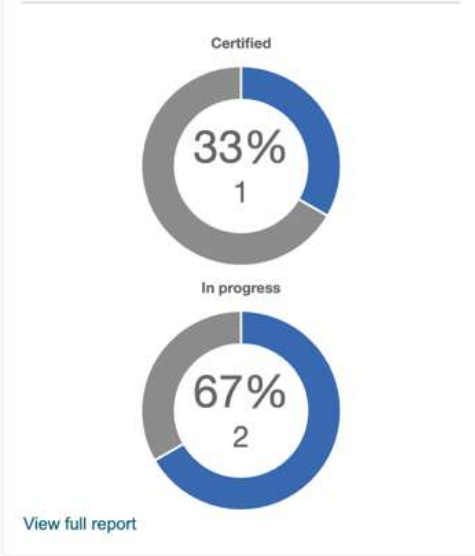
[Customise this page](#) [Manage dashboards](#)

MANAGER DASHBOARD

PRODUCT KNOWLEDGE MODULES



MANAGER CERTIFICATION COMPLETION STATUS OVERVIEW



INDIVIDUAL COMPLETIONS

Assignment name	User's Fullname	Submission status	Submission grade	Date
Week 10 Project	Derek Sykes	submitted	No grade	21 Oct 2022 at 08:53
Week 10 Project	Alastair Cook	submitted	No grade	21 Oct 2022 at 09:05
Week 11 Assignment	Zak Crawley	graded	85	21 Oct 2022 at 09:18
Week 11 Assignment	Derek Sykes	graded	95	21 Oct 2022 at 12:45
Week 12 Assignment	Derek Sykes	submitted	No grade	25 Oct 2022 at 17:04

MY COURSE PROGRESS





EDA

Welcome to the

EDA ACADEMY

DISTRIBUTION, SWITCHGEAR AND PROTECTION

Part of the EDA Electrotechnical Product Knowledge Programme



DISTRIBUTION, SWITCHGEAR AND PROTECTION

Your progress



DISTRIBUTION, SWITCHGEAR AND PROTECTION

This interactive e-learning course has been created from the EDA product knowledge module book, originally produced by the sector for the sector in 2018 and updated in 2021. Should you wish to read the original materials you can download the full book here. Alternatively you can purchase a printed copy from the EDA. Contact the training team to acquire.

Before you start the course ...

Check out this important information before you start the learning.

Recovery and Recycling of Electrical Waste

Do you know where the recycling bins are and your organisational policies on electrical waste? This is important information to know and understand before you start the course.

Be Counterfeit Savvy

You might have a customer ask you why the products you're suggesting are so much more expensive than, say, a product from an on-line reseller. Or, at some point in your career in wholesale, you might be approached directly from an importer of products, wishing you to stock their very attractively priced products. Be sure to check out they are not counterfeit and they are compliant.

Unit 1: Introduction

Introduction

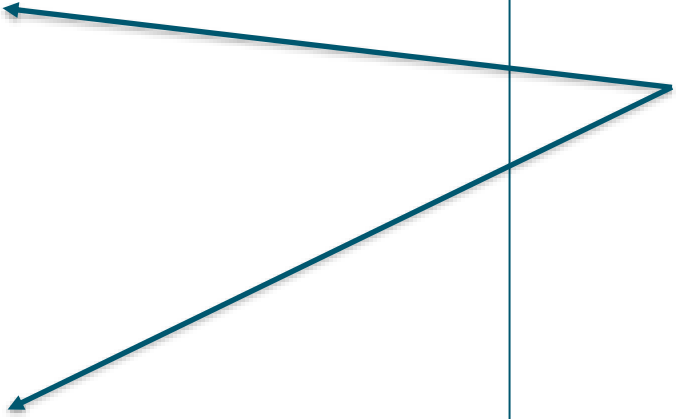
Unit 2: Generation transmission and distribution

Generation transmission and distribution

Unit 3: Distributing electricity within a property

Distributing electricity within a property

Not available unless: The activity **Generation transmission and distribution** is marked complete



Shows progress through the course completion



Why use AC?

The video player shows a presenter on the left and a diagram on the right. The diagram is a blue triangle with a horizontal line across its middle. The top vertex contains the letter 'U', the bottom-left vertex contains 'I', and the bottom-right vertex contains 'R'. A play button icon is overlaid on the left side of the triangle. The video player interface includes a title 'Why use AC', a channel name 'EDA Training', and a Vimeo logo at the bottom right.

Unit 3: Direct Current and Alternating Current

11% COMPLETE

- Introduction
- Why use AC?
- Traditional Generation: Coal, Gas, Nuclear and Hydro Power
- Renewable Generation
- Introduction to the National Grid
- 3-Phase Supplies
- Single-Phase Supplies
- Voltages Used in the UK Public Supply
- Test Your Knowledge

Shows progress through the course completion

Click to start the video

CONTINUE



EDA
Est. 1914

Gary Parker



Helen Fisher



EDA
Est. 1914

Dave Austin

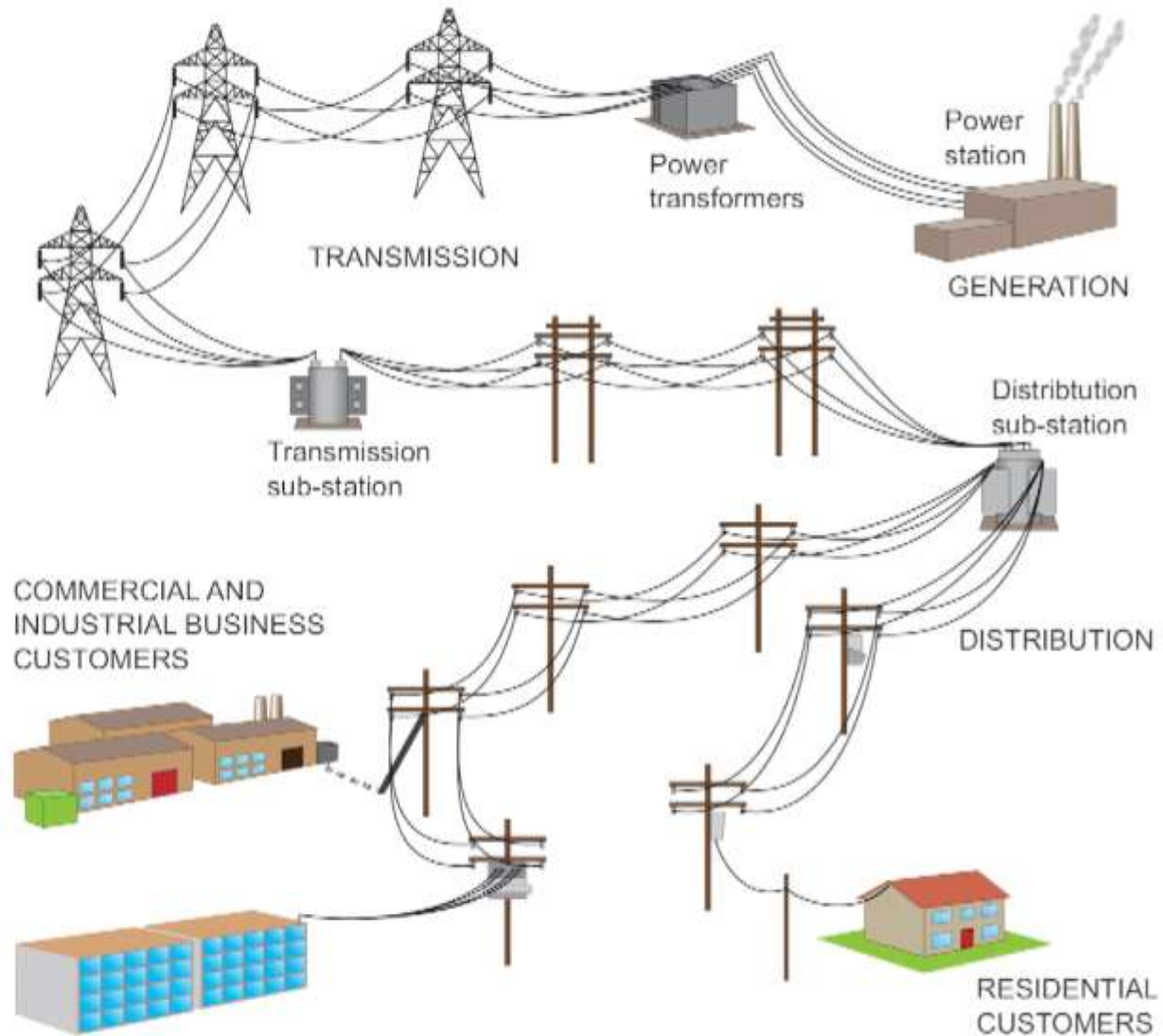


Frankie Snobel





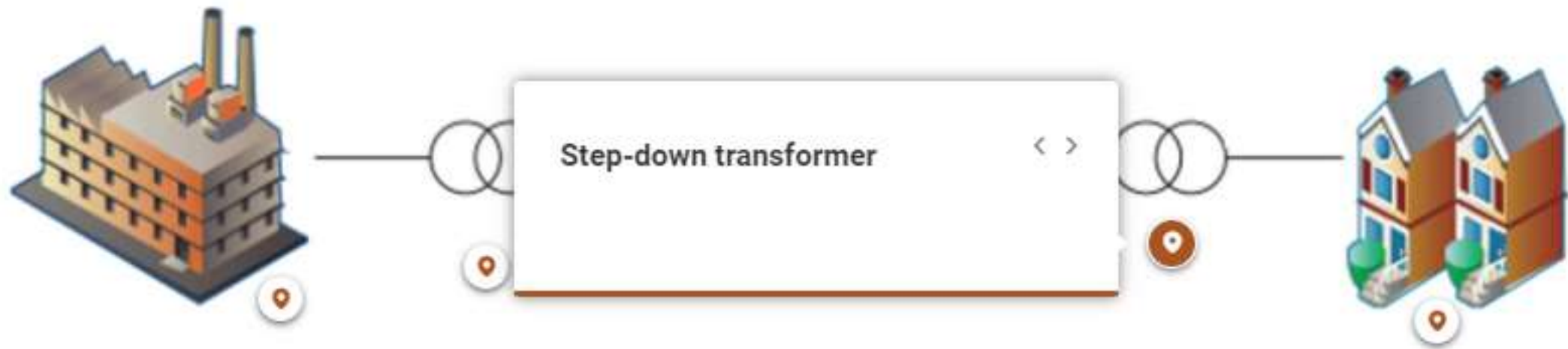
Customer service – unit 6 The 80/20 rule of stock and sales







How transformers help power distribution in the UK.



Complete the content above before moving on.



In nuclear power stations, the is heated by heat produced in the nuclear reactor, and this produces steam.

Type your answer here

SUBMIT



Complete the content above before moving on.

Drag the top card and drop onto the correct group.



A drag-and-drop interface with a light gray background. At the top center is a white card with a thin orange border containing the text "Nuclear power" and a three-line menu icon below it. Below this card are three dashed gray boxes representing target groups: "Fossil Fuels" on the left, "Renewable Generation" in the center, and "Low Carbon Energy" on the right.



Complete the content above before moving on.



In a single-phase supply, the usual voltage between Phase and Neutral is?

- 23 V
- 230 V
- 2300 V

SUBMIT



Complete the content above before moving on.



Question 1

Not yet answered

Marked out of 1.00

[Edit question](#)

Which of the following best describes AC current flow in a conductor?

Select one:

- A. The electric current flow is static
- B. The electric current flows in one direction only
- C. The electric current does not flow
- D. The electric current flow switches direction quickly

Question 2

Not yet answered

Marked out of 1.00

[Edit question](#)

Which of the following most accurately describes the effect of electric current on the human body?

Select one:

- A. You can start to feel a current of around 1 mA, and death is probable at between 50 mA and 80 mA
- B. You can start to feel a current of around 9 mA, and death is probable at between 50 mA and 80 mA
- C. You can start to feel a current of around 1 mA, and death is probable at around 20 mA
- D. You can find it hard to let go at around 9 mA, and death is probable at around 20 mA

Question 3

Not yet answered

Marked out of 1.00

[Edit question](#)

What name is used for a cable that consists of one conductor, made up of twisted strands protected by an insulator?

Select one:

- A. SWA (Steel Wire Armoured)
- B. Singles
- C. Thermosetting XLPE
- D. Multi-core

Question 4

Not yet answered

Marked out of 1.00

[Edit question](#)

Which of the following best describes the action of electrostatic force on charged particles?

Select one:

- A. Positive charges repel each other
- B. Negative charges attract each other
- C. Positive charges attract each other
- D. Negative and positive charges repel each other



PRINCESS ROYAL
TRAINING AWARD
2022



**Any
questions?**