

EDA Business Forum

21st May 2015



Dave Forrester

SELECT

Head of Technical Services



SELECT

- The trade association for Electrical Contractors in Scotland
- Founded in 1900 as the Electrical Contractors' Association of Scotland
- Over 1200 members
- 40+ staff – based at The Walled Garden, Midlothian

Mission Statement

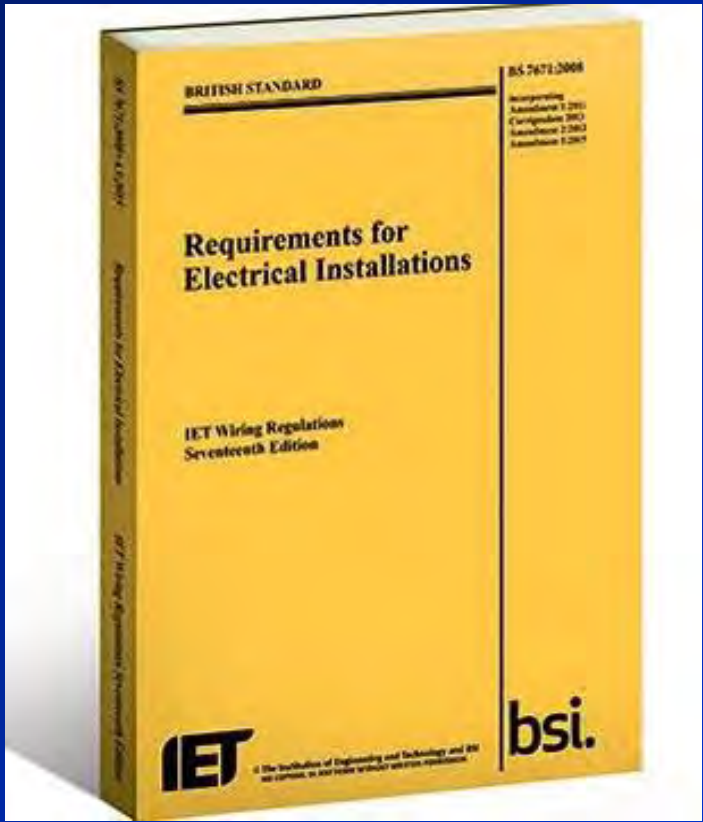
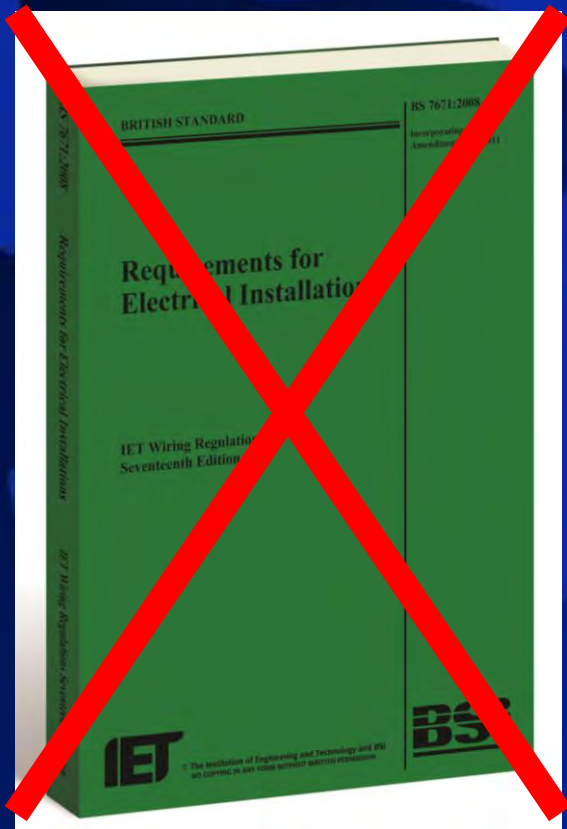
“To be recognised as delivering the exceptional support which enables our members to prosper”



Questions

- What are the changes to BS 7671?
- Why the change?
- What does it mean for contractors/clients/wholesalers?*
- What can Wholesalers do to prepare?

What are the changes?



What are the changes?

- Numbering system
- Definitions (2)
- Assessment of general character (3)
- Protection for safety (4)
- Selection & erection of equipment (5)
- Special locations (7)
- Appendices

What are the changes?

Regulation 421.1.201

Within domestic (household) premises, consumer units and similar switchgear assemblies shall comply with BS EN 61439-3 and shall:

- (i) Have their enclosure manufactured from non-combustible material, or
- (ii) Be enclosed in a cabinet or enclosure constructed of non-combustible material

What are the changes?

Regulation 521.11.201

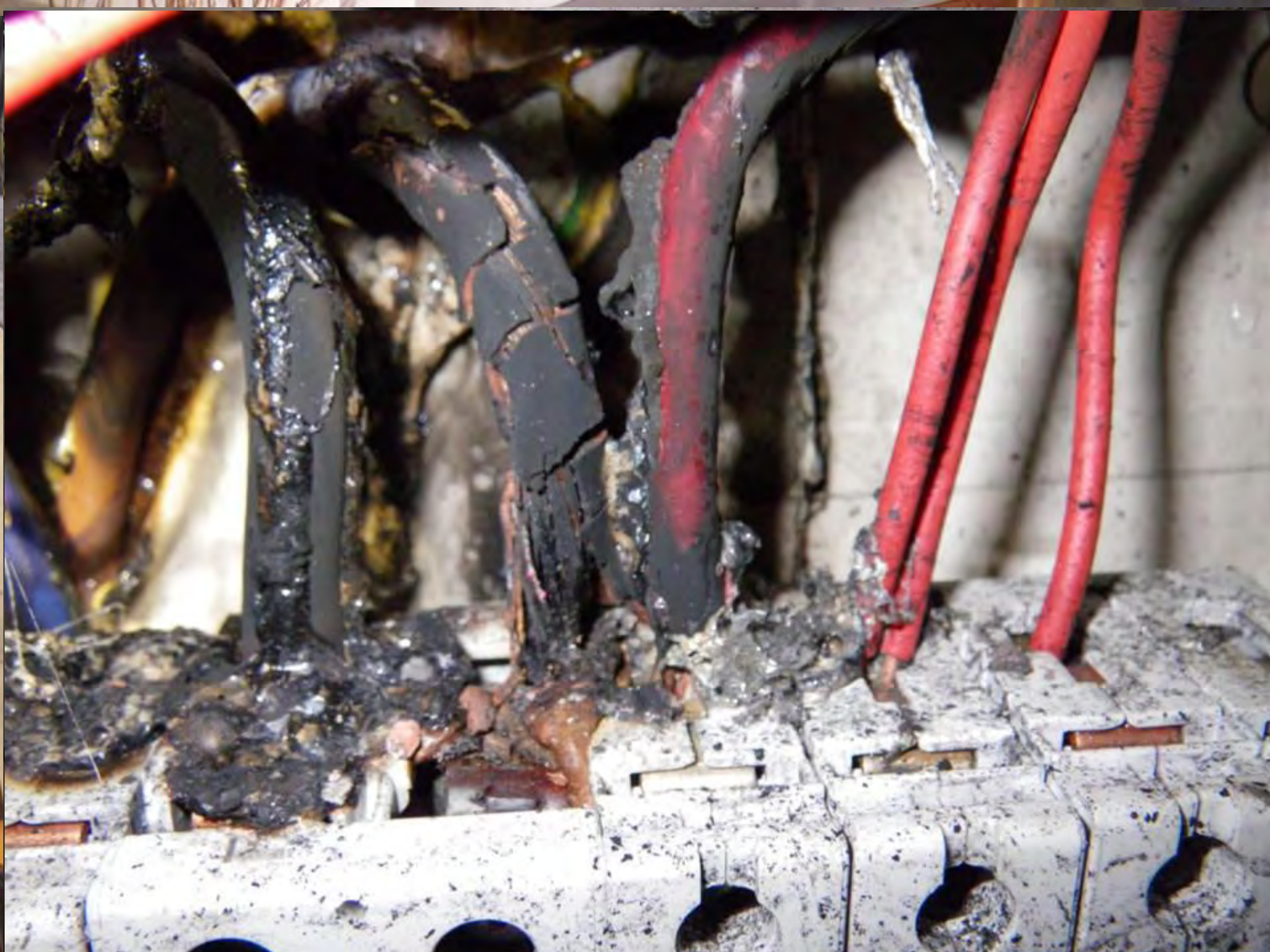
Wiring systems in escape routes shall be supported such that they will not be liable to premature collapse in the event of fire. evacuation and firefighting activities.

Why the change?



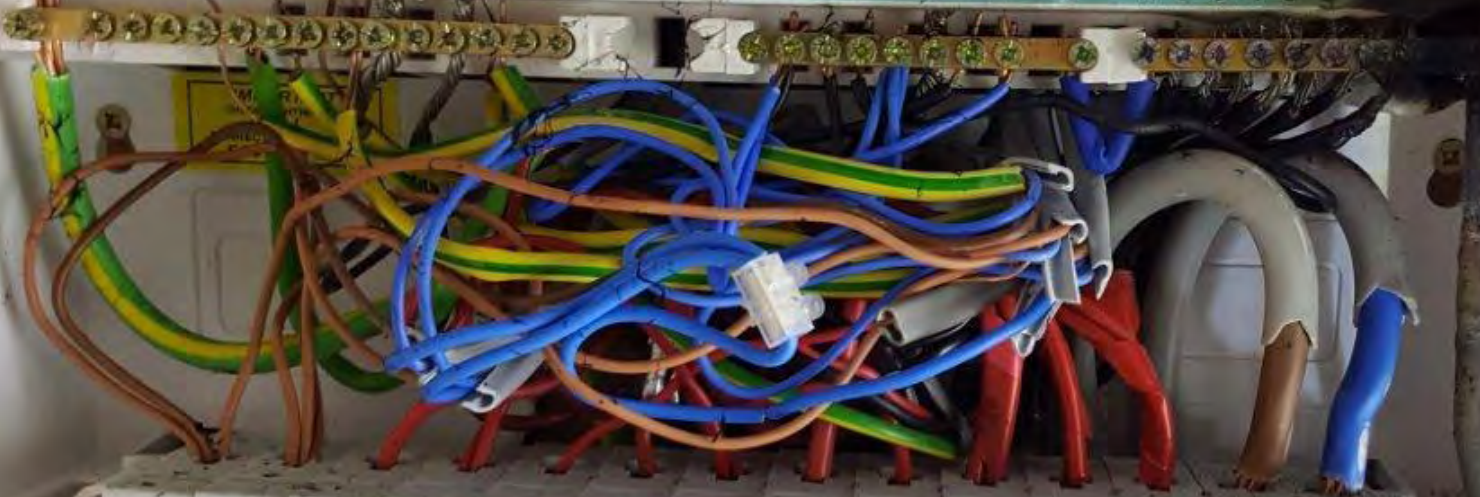
SELECT





B B1 2 3 4 5 6 7 8 9 10 11 12

N 12 11 10 9 8 7 N N N 6 5 4 3 2

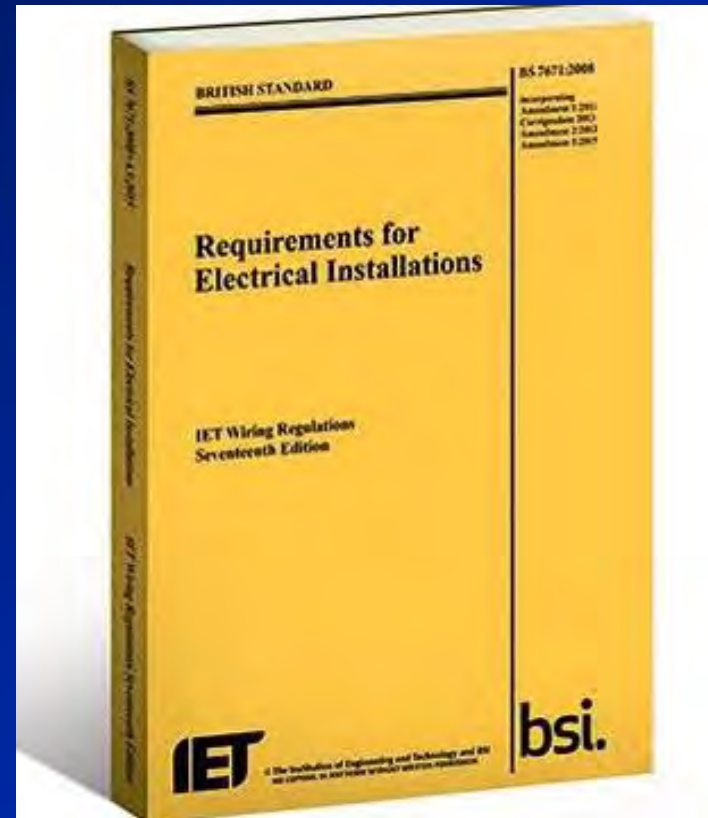


Live Terminals Behind This Cover



What does it mean?

- Amendment 3 comes into effect 1st July 2015
- 421.1.201 comes into effect 1st January 2016



What does it mean?

1st Jan 2015 - 31st Dec 2015
1st Jan 2016 - 31st Dec 2016



Vs



What can Wholesalers do?

- Raise awareness
- Talk to manufacturers
- Offer choice
- Educate staff

Common Questions

How does cable entry to a consumer unit complying with Regulation 421.1.201 affect the non-combustible enclosure?

The fire containment capability of the enclosure could be affected if the cable installation method does not take account of the manufacturer's instructions.

Common Questions


Can wiring systems installed in escape routes be supported using non-metallic cable clips, cable ties, conduit or cable trunking?

Yes provided that this is not the sole means of cable support.

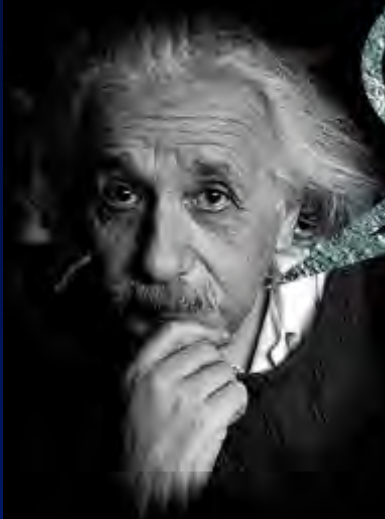
The wiring system must not be liable to premature collapse in the event of fire so suitable fire resistant support will be required at appropriate intervals.

Thought for the day

IF YOU THINK
IT'S EXPENSIVE
HIRING A GOOD
ELECTRICIAN
TRY HIRING A
BAD ONE



*"It is not the answer
that enlightens,
but the question."*



*"The most important
thing is not to stop
questioning."*

Any Questions?



SELECT